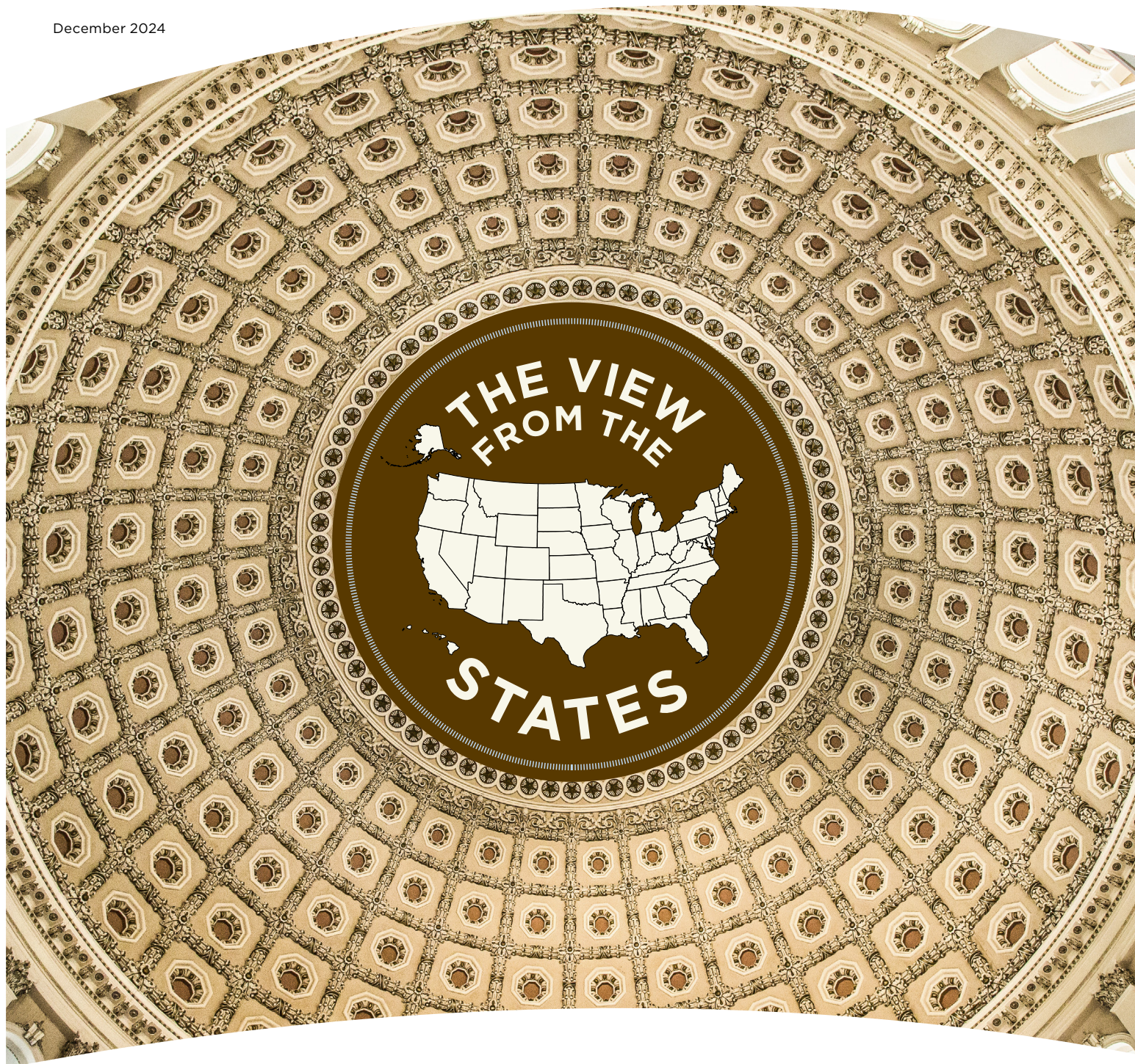


# Designing P.L. 94-171 Redistricting Data for the Year 2030 Census

*The View From the States*

By: Colleen Joyce, Tom Morton,  
James Whitehorne, and Jennie Karalewich

December 2024



## Forward

The passage of Public Law 94-171 in 1975, lobbied for by the National Conference of State Legislatures (NCSL), kicked off an essential partnership between the federal government and states as they began working together to provide the nation with the best data possible for redistricting and voting law enforcement purposes. More specifically, the U.S. Census Bureau's Redistricting Data Program and state officials who are responsible for their state's legislative and congressional redistricting (mostly the legislative branch) have partnered to ensure accurate data are available for congressional reapportionment for federal, state, and local redistricting.



For nearly 50 years, states have provided essential feedback to the Redistricting Data Program. State appraisals began with the 1980 Census and have been conducted for the 1990, 2000, and 2010 Censuses as well. Each decade, the Census Bureau has brought new ideas for innovations, and state representatives have offered their perspectives on whether these new ideas would enhance the collection of quality data and provide better data usability. Likewise, states and the NCSL have offered their suggestions for innovations and improvements.

Equally important, states have continued to choose throughout the decades to participate in voluntary programs offered by the Census Bureau through the Redistricting Data Program (and through other programs) to help ensure that the geography used by and provided by the decennial census is as accurate as possible. These programs include the Block Boundary Suggestion Project, the Voting District Project, the Local Update of Census Addresses, and the Boundary and Annexation Survey.

For the 2020 Census, the Census Bureau collaborated again with the NCSL to elicit input from public officials in states to build on earlier successes and plan for changes where needed and feasible. This report constitutes the final chapter (Phase 5) of the 2020 Census Redistricting Data Program and continues a half-century tradition that is considered one of the best collaborations between the states and the federal government. This report indeed reflects the view from the states.

Wendy Underhill  
National Conference of State Legislatures  
Director, Elections & Redistricting

# Designing P.L. 94-171 Redistricting Data for the Year 2030 Census: The View From the States

Issued December 2024.



**U.S. Department of Commerce**  
**Gina M. Raimondo,**  
Secretary

**Don Graves,**  
Deputy Secretary

**Economics and Statistics  
Administration**  
**Oliver Wise,**  
Under Secretary for Economic Affairs

**U.S. Census Bureau**  
**Robert L. Santos,**  
Director

## Suggested Citation

U.S. Census Bureau,  
*Designing P.L. 94-171 Redistricting  
Data for the Year 2030 Census:  
The View From the States*  
U.S. Government Publishing Office,  
Washington, DC,  
December 2024.



### **U.S. CENSUS BUREAU**

**Robert L. Santos,**

Director

**Ron S. Jarmin,**

Deputy Director and Chief Operating Officer

**Deborah Stempowski,**

Associate Director for Decennial Census Programs

**Tasha Boone,**

Assistant Director for Decennial Programs Scheduling and  
Operations

# Contents

## Chapters

1. The 2020 Census Redistricting Data Program Revisited.....	1
2. Executive Summary of State Recommendations.....	5
3. Detailed Recommendations From the States.....	9
4. The Census Bureau’s Response and Early Plans for the 2030 Redistricting Data Program .....	21

## Appendixes

A. Public Law 94-171 .....	29
B. Official Recipients of the 2020 Census P.L. 94-171 Population Counts .....	31
C. Redistricting Statistics .....	47
D. Redistricting Data Software Vendors .....	51
E. Federal Register Notice—Establishment of the 2030 Redistricting Data Program.....	54

## **Preface**

### **Report of the 2020 Census Public Law (P.L.) 94-171 Program Evaluation**

Since the passage of P.L. 94-171 in 1975, states have provided important feedback regarding their voluntary participation in the U.S. Census Bureau's Redistricting Data Program (RDP). State feedback informs the design of the RDP for the next decennial census. The RDP is a unique collaboration between the Census Bureau and state officials responsible for their respective state's legislative redistricting. As in previous decades, the Census Bureau, in cooperation with the National Conference of State Legislatures, sought input from those public officials in the states following the 2020 Census to build upon the 2020 Census program's success and to plan for changes where needed and feasible. These state appraisals exist for each decade from 1980 through 2010, and now for 2020. This report constitutes the latest of these appraisals and is the final phase (Phase 5) of the 2020 Census RDP. This report reflects the view from the states.



## Chapter 1.

# The 2020 Census Redistricting Data Program Revisited

The 2020 Census Redistricting Data Program (RDP) was designed based on evaluations and recommendations from state participants during the program evaluation phase (Phase 5) of the 2010 RDP. The 2020 RDP was conducted through five phases and in accordance with Public Law (P.L.) 94-171; in that the U.S. Census Bureau worked in a nonpartisan manner with states to identify and provide the small-area population counts necessary for legislative redistricting and provided these counts to the governor, the legislative majority and minority leaders, and the public bodies responsible for legislative redistricting in each state. Although those results were required by law to be delivered within 1 year of Census Day (April 1, 2021), the COVID-19 pandemic delayed their provision until August 12, 2021.

The Census Bureau officially established the 2020 RDP in the Federal Register on July 15, 2014. In 2015, the Census Bureau's Redistricting and Voting rights Data Office (RVDO) centralized the RDP at the Census Bureau headquarters in Suitland, Maryland, and added permanent and temporary staff to manage and conduct the 2020 RDP.

Much of the work of the 2010 RDP had been conducted in the Census Bureau's regional offices. By centralizing the RDP, the RVDO was able to standardize both communication with state redistricting partners and review processes for incoming and outgoing redistricting data.

Shortly after the 2020 RDP was announced in the Federal Register, the RVDO invited state governors and legislative leadership to designate nonpartisan liaisons to represent their state. The nonpartisan state liaisons, or their successors, served as the primary point of contact between the Census Bureau and the state for the RDP throughout the program's life cycle.

In late 2015, RVDO staff began meeting with state officials (when requested by the official liaison) to discuss the benefits of participation in the 2020 RDP and other 2020 Census engagement opportunities. These kickoff meetings were held at 26 state capitols (AL, AK, AR, CA, CO, GA, HI, ID, IL, IN, IA, KS, MI, MN, MS, MT, NH, NJ, NM, NY, NC, ND, OK, RI, WI, WY), where Census Bureau staff presented details of the 2020 RDP and plans for other 2020 Census activities. In addition to those 26 state kickoff meetings,

redistricting staff performed on-site training (on request) for 12 states (CT, FL, ID, MA, MI, NC, ND, NJ, NV, OH, SD, TN) and Puerto Rico on how to participate in the 2020 RDP.

### **PHASE 1: BLOCK BOUNDARY SUGGESTION PROJECT (2016–2017)**

The first phase of the 2020 RDP was the Block Boundary Suggestion Project. Phase 1 was divided into two cycles: initial delineation (BBSP) and verification (BBSPV). During Phase 1, the main goal was for participants to identify and flag features that should be either held (referred to as a “must hold”) as a census block boundary or not held (referred to as a “do not hold”) as a census block boundary to inform the creation of the 2020 census block universe. During Phase 1, the RVDO supplied states with prototype block files to enhance their block flagging efforts. Prototype blocks were approximations of the census blocks that the Census Bureau would have created if the 2020 census blocks were delineated at that time in the decade.

In addition to block boundary flagging, participants could make updates to linear features

---

(e.g., roads and railroads); area landmarks (e.g., parks and lakes); and point landmarks (e.g., monuments). Participants could also suggest updates to legal boundaries (e.g., incorporated places and townships). These actions allowed states to construct some of the small-area geography they would need for legislative redistricting. Phase 1 participation was voluntary. Thirty-nine states, the District of Columbia, and Puerto Rico (for a total of 41) participated in one or both Phase 1 review cycles. A listing of the participating and nonparticipating states is available in Table 3 of the document “Strength in Numbers: A Guide to the 2020 Census Redistricting Data From the U.S. Census Bureau” at <https://www2.census.gov/library/publications/decennial/2020/2020-census-strength-in-numbers.pdf>.

## **PHASE 2: VOTING DISTRICT PROJECT (2017–2020)**

The second phase of the 2020 RDP was the Voting District Project (VTDP). Phase 2 was divided into three cycles: the initial delineation (VTD) where participants submitted their VTD boundaries, initial verification (VTDV) where participants reviewed their submitted VTDs to ensure correct representation in the Census Bureau’s Master Address File/Topologically Integrated Geographic Encoding and Referencing (MAF/TIGER) System, and final verification (VTDV2) where participants had a final chance to review and verify the VTDs they previously submitted and updated during the first two cycles of the project.

When starting their VTD submissions, states had the option to start the process using their 2010 VTDs conflated to match current boundaries in the MAF/TIGER System, their own VTD shapefile, their own block equivalency files, or to start from scratch with no preformed VTDs.

In addition to voting district updates, participants could provide boundary corrections for state legislative district and congressional district boundaries. As with Phase 1, participants also could make updates to linear features, to area landmarks, and suggest updates to legal boundaries. This allowed states to ensure that the VTDs they submitted would align with other geographic areas appropriately. Like Phase 1, Phase 2 participation was voluntary. Forty-seven states, the District of Columbia, and Puerto Rico (for a total of 49) participated in one or more Phase 2 review cycles. A listing of the participating and nonparticipating states is available in Table 3 of the document “Strength in Numbers: A Guide to the 2020 Census Redistricting Data From the U.S. Census Bureau” at <https://www2.census.gov/library/publications/decennial/2020/2020-census-strength-in-numbers.pdf>.

## **PHASE 3: DELIVERY OF THE 2020 CENSUS REDISTRICTING DATA (P.L. 94-171) SUMMARY FILE AND GEOGRAPHIC PRODUCTS**

Phase 3 constituted the delivery of the Redistricting Data (P.L. 94-171) Summary File (national and state-based and hereinafter referred to as “redistricting data”) and the geographic support products to states.

The 2020 Census redistricting data included privacy-protected population counts for small areas within each state and counts for group quarters (GQ) and housing by occupied/vacant status.

In January and February 2021, the Census Bureau delivered the geographic support products to the states. The geographic products included:

- 2020 Census P.L. 94-171 Maps
  - Voting District/State Legislative District Reference Maps.
  - County Block Maps.
  - Tract Reference Maps.
  - School District Reference Maps.
- 2020 Census P.L. 94-171 TIGER/Line® Shapefiles.
- 2020 Census P.L. 94-171 Block Assignment Files and Name Lookup Tables.

The Block Assignment Files contain the codes for various geographic areas and the 2020 census block codes for the census blocks that comprise those areas. They are designed to be used in conjunction with the Name Lookup Tables, which include the geographic area codes with their names.
- 2020 Census P.L. 94-171 Block Relationship Files (crosswalk of 2010 census blocks to 2020 census blocks).

The Census Bureau released the legacy format redistricting data to states and the public on August 12, 2021. The legacy format files consisted of a geographic header file and three data segment text files for each state/state equivalent, collectively comprising the six redistricting data tables. The Census Bureau delivered the more user-friendly formatted redistricting data to official state recipients on physical media (DVD and USB flash drive) and released the data to states and the public on data.census.gov on September 16, 2021.

The redistricting data included population totals and summaries by race, Hispanic or Latino origin, and voting age for all included geographic areas (states, counties or equivalent areas, state legislative districts, voting districts, county subdivisions, school districts, places, American Indian areas, Alaska Native areas, Native Hawaiian areas, urban growth areas, census tracts, block groups, and census blocks). These files also include housing unit counts by occupancy status (occupied or vacant) and total population counts in GQ by GQ type.

#### **PHASE 4: COLLECTION OF POST-2020 CENSUS REDISTRICTING PLANS (2021-2023)**

During Phase 4, the RVDO collected the post-2020 Census congressional and state legislative district plans, delineated using the Phase 3 materials, from all states, the District of Columbia, and the Commonwealth of Puerto Rico.

The Census Bureau incorporated the updated congressional and state legislative district



James Whitehorne, chief of the Redistricting and Voting Rights Data Office, speaks with 2020 Redistricting Data Program liaisons and stakeholders at a National Conference of State Legislatures meeting.

boundaries into the MAF/TIGER System, produced geographic products, tabulated 2020 Census data for the new boundaries, and released the geographic products and 2020 Census data to the states and the public.

The American Community Survey (ACS) released data for the new congressional district plans in both the 1-year and 5-year estimates and released data for the new state legislative district plans in the 5-year estimates.

Following the release of the decennial census data, updates to congressional and state legislative plans are solicited every 2 years through the RDP.

#### **PHASE 5: EVALUATION OF THE 2020 CENSUS REDISTRICTING DATA PROGRAM AND RECOMMENDATIONS FOR THE 2030 CENSUS (2021-2025)**

The fifth and final phase of the 2020 RDP was the evaluation of the 2020 program. During Phase 5, the RVDO solicited feedback

from the states on the 2020 RDP and recommendations for the 2030 RDP. To collect this information, the Census Bureau worked directly with stakeholders and the official program liaisons to conduct a review of the successes and shortcomings of the 2020 RDP and whether it fulfilled the P.L. 94-171 mandate. This collaborative effort developed recommendations for the 2030 RDP. At the close of Phase 5 and of the 2020 RDP overall, the RVDO published the fifth edition of the “Designing P.L. 94-171 Redistricting Data for the 2030 Census—The View From the States” document.



## Chapter 2.

# Executive Summary of State Recommendations

This chapter contains a summary of the major recommendations from states, submitted by the official 2020 Redistricting Data Program (RDP) liaisons and technical staff from each of the states, the District of Columbia, and Puerto Rico. U.S. Census Bureau staff received feedback from state officials primarily through a series of listening sessions and at numerous National Conference of State Legislatures (NCSL) meetings including the 2021 Salt Lake City Redistricting Seminar and the 2021 and 2022 Annual Legislative Summits. These recommendations are broken into three primary categories: geographic operations, data content and delivery, and policy. Although some topics may cross between these categories, they have been placed in the category with their primary focus. Chapter 3 provides a more detailed description of these recommendations.

### **GEOGRAPHIC OPERATIONS: THE BLOCK BOUNDARY SUGGESTION PROJECT (BBSP) AND THE VOTING DISTRICT PROJECT (VTDP)**

For the past several decades, states have consistently stated that voting districts and census blocks, and the ability for states

to create, update, and refine these small area geographies, are essential to their redistricting work. Collection of census block boundary suggestions in the BBSP and voting district boundaries in the VTDP should be continued and should occur as two separate geographic operations. Keeping BBSP and VTDP as two distinct projects, with BBSP occurring first, allows for census block boundary suggestions made in BBSP to be available as part of the source geography liaisons use later when providing voting district boundaries. This separation, and the ability to continue submitting census block boundary suggestions during the VTDP, also allow states to continue to refine their census block boundaries in alignment with the new voting districts during the VTDP.

### **Legal Boundary Updates**

States appreciated the ability to suggest legal boundary updates for consideration by the Boundary and Annexation Survey (BAS) during the BBSP and VTDP. Because of the integrated nature of census blocks to all other Census Bureau geography, and the relationships VTDPs have with places, county subdivisions, and other geographic areas, states

found the ability to suggest updates and corrections to other geographies extremely important. Allowing these suggested BAS updates will ensure alignment between legal boundaries, block boundaries, and voting district boundaries thus helping prevent the creation of small/sliver census blocks between the different geographies.

### **Block Boundary Suggestion and Voting District Project Schedules**

The primary 2020 RDP geographic operations occurred over 5 years, from 2016–2020, with an update and subsequent update verification period that ran from January through May each year. The exception was year 5 (2020), when the update period ended in March as the geography was finalized for the 2020 Census. The schedule was as follows:

- Year 1 (2016)—BBSP initial delineation
- Year 2 (2017)—BBSP verification
- Year 3 (2018)—VTDP initial delineation
- Year 4 (2019)—VTDP verification
- Year 5 (2020)—VTDP final verification

---

States indicated that continuing the same project schedules, from January through May (except in year 5), is preferred over the possible alternative of a July through September delineation/verification window. Although there was some interest in moving the project timeframe out of concurrence with the legislative session, most states agreed that the benefits of the January to May timeframe outweighed the benefits of moving to a July to September timeframe. The benefits of a January to May window include an alignment between the BBSP, VTDP, and BAS schedules (which facilitates submittal of suggested BAS updates) and an additional 2 months to perform the work.

The opportunity to do a final verification in year 5, over a 3-month period, was new to the RDP in 2020. States overwhelmingly stated that that opportunity to report any last-minute changes to their geographies was vital for getting the accurate 2020 Census data tabulations they needed to conduct their post-census redistricting. A similarly scheduled final verification opportunity in 2030 should be part of the 2030 RDP.

## **DATA CONTENT AND DELIVERY: REDISTRICTING DATA (P.L. 94-171) SUMMARY FILE AND GEOGRAPHIC SUPPORT PRODUCTS**

### **Release Timing and Format**

States prefer that the redistricting data are released in both legacy format and on data.census.gov at the same time, but the public release should follow an embargo period. The embargo period

would allow state governors and other legislative leaders an opportunity to process and review the data before the public release, thus preparing them to respond to questions they may receive. The Census Bureau should continue to release support tools (e.g., Access table shells, SAS code, R-code) for importing the legacy format files into state databases. States also recommend joining the geoheader records to the data segments in the legacy file.

### **Tabulation Geographies**

States have continued to emphasize the need for data tabulated in census blocks and voting districts as essential, in addition to other standard tabulation geographies such as counties, county subdivisions, congressional districts, state legislative districts, school districts, places, and American Indian areas. Data tabulated at the census block level are essential for states to meet population deviation requirements, to create cohesive communities of interest, and to meet requirements to draw compact districts.

### **Data Content**

States were satisfied with the six tables provided as part of the redistricting data in 2020, noting only a few exceptions or concerns:

- States recognize that the Census Bureau follows the Office of Management and Budget's 1997 Statistical Policy Directive No. 15: Standards for Maintaining, Collecting, and Presenting Federal Data on Race and Ethnicity. They requested that they be kept informed of any changes to the standards,

as spelled out in the revised Directive 15, and changes to the redistricting data that may occur as a result. They also indicated that they need to continue to receive the race and ethnicity data for the minimum race and ethnicity reporting categories and that it is important to continue to provide the ability to create both the race or ethnicity as an "alone" value or as an "alone-or-in-combination" value for each minimum reporting racial or ethnic group. However, they indicated that they may not need all the race/ethnicity combinations provided in the 2020 redistricting data, noting that some combinations could be collapsed. States also expressed concerns with the growth in the number of people reporting solely as the category "Some Other Race."

- States expressed a desire to continue including vacant and occupied housing unit counts in the Housing Unit (HI) table and to continue holding the total housing unit counts as "invariant" (i.e., not allowing data disclosure avoidance methods in 2030 to affect total counts). They appreciated the Group Quarters by Type Table (P5) but requested that the Census Bureau add more detailed GQ types and add race and ethnicity characteristics to that file in 2030. They also requested the GQ total population counts and GQ type be held invariant and not be subjected to changes due to data disclosure avoidance measures.

- States highlighted that the use of the published redistricting data requires that the data be consistent when geographies are combined. For example, the total population of a county should be the same as the sum of the total population of the tracts that make up that county. They indicated that this consistency must be maintained through all geographic entities that have a hierarchical relationship with other geographies. In addition, the data must also be consistent with real-world expectations, such as only including whole and nonnegative person counts.

### **Geographic Support Products**

States found the geographic support products released in conjunction with the redistricting data, which included shapefiles, census block crosswalk tables, block assignment files, name lookup tables, and PDF maps, useful and requested they be released again in 2030. States also indicated that they appreciate other Census Bureau visualization tools, such as the Tableau visualizations, which they used when discussing the data with members of the press and in doing quick comparisons with other states. They would like to have more geographies added to the Tableau visualizations.

### **Prototype Data File**

As they have in previous decades, states reiterated the usefulness of a Redistricting Data (P.L. 94-171) Prototype Summary File delivered at least 2 years prior to the 2030

data. States use this file, which mirrors in format and content the official decennial Redistricting Data (P.L. 94-171) Summary File, to design and test their database systems.

### **POLICY MATTERS**

#### **Residence Criteria and Situations**

As of the first post-2020 Census redistricting cycle, 13 states representing approximately one-half of the U.S. population now have statutory or policy requirements to reallocate specific populations from where they are counted in the decennial census to an alternate location. The 2020 Census provided support for these efforts by including group quarters (GQ) data as part of the redistricting data and by making available a public geocoding service based on the 2020 Census geography and address data. States that have this reallocation obligation request that the Census Bureau continue this additional support. They also ask that the Census Bureau continue to look for additional support possibilities, up to and including a review/revision of where people in GQ, specifically prisoners, are counted.

States also indicated support for the 2020 Census changes to the military residence criteria, which for the first time differentiated between deployed and stationed personnel. However, they encouraged the Census Bureau to provide consistency between decennial census and ACS residence situations and criteria, so the datasets more closely align.

### **WHAT IS DIFFERENTIAL PRIVACY?**

Differential privacy is a scientific framework for processing data to protect the identities and personal information of the people in the data. It works by adding statistical noise—small, random additions or subtractions—to every published statistic so that no one can reidentify a specific person or household with any certainty using any combination of the published data.

Differential privacy forms the foundation of the Disclosure Avoidance System used to adjust the data to protect 2020 Census respondent confidentiality.

### **Title 13 of the United States Code (U.S.C.)**

Title 13, U.S.C. provides the Census Bureau the authority to do its work and provides strong protections for the data it collects about individuals and businesses. Over the years, the Census Bureau has used a variety of tools (Figure 1), or data disclosure avoidance protections, to keep respondent data confidential. States acknowledge the vital role that protecting respondent data serves in building trust for the public to participate in the census. However, many states have expressed frustration with the Census Bureau's interpretation of Title 13 and its implications on published data products. They requested that the Census Bureau reevaluate the current interpretation.

## Disclosure Avoidance and Data Accuracy

States consistently indicated a need for accurate data at small levels of geography, historically identified by them as voting districts and census blocks, for the purpose of redistricting. Accurate small area data are critical to their ability to conduct both congressional and legislative redistricting that complies with the standards established by law and precedent over the last several decades. These data are also used for redistricting smaller jurisdictions and any decrease in accuracy of the data have a relatively larger detrimental impact on these smaller communities. States recommend that accuracy of the data for small area geography be further improved over what was provided in the 2020 Census and that the Census Bureau continue to research alternatives to differential privacy as its

respondent protection tool with an eye to providing that better accuracy.

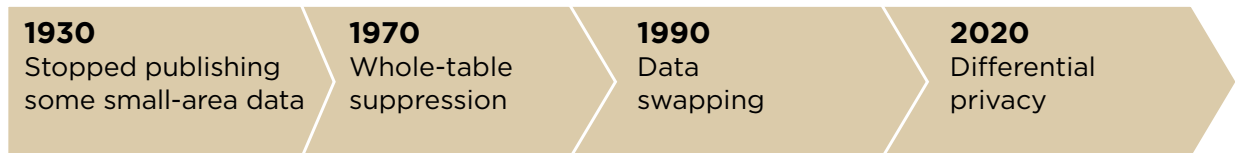
States reiterated their desire for a “one number” census, as previously requested for the 1990, 2000, 2010, and the 2020 Censuses. This call for a “one number” census reflects the need for a single count for each item for which data are tabulated and which serve as the one and only official enumeration. Some data users indicated that if differential privacy is again used as the disclosure avoidance technique for the 2030 Census, then error statistics for the total population tables (or the tools to calculate those error statistics) might be useful, particularly for small jurisdictions. However, concerns that including error statistics might lead to confusion as to what the “official” count is outweighed the desire to include such statistics with the data.

## Communication

States requested that the Redistricting and Voting Rights Data Office continue to communicate over the decade about any changes that could affect the RDP and identified several areas where that communication should be continued or could be improved. These areas include providing a more detailed explanation of the role of the liaisons when soliciting them from states so that the most appropriate people can be assigned the role, continuation of the state capitol kickoff meetings, establishment of a liaison forum where official liaisons can communicate between each other and where solutions can be delivered to the group rather than to individuals, and earlier training for liaisons once assigned.

Figure 1.

### Brief History of Census Disclosure Avoidance Protections



Source: U.S. Census Bureau.



## Chapter 3.

# Detailed Recommendations From the States

Throughout the 2020 Redistricting Data Program (RDP), the U.S. Census Bureau's Redistricting and Voting rights Data Office (RVDO) sought feedback and recommendations from states on all aspects of the RDP. Formal feedback sessions (Table 1) were conducted through focused, virtual listening sessions with the program's official liaisons and critical stakeholders, post-conference sessions at the National Conference of State Legislatures (NCSL) annual legislative summit meetings, the 2021 Salt Lake City Redistricting Seminar (also hosted by NCSL), and attendance at various conferences where 2020 Census data users would be present to discuss their experience using redistricting data and geographic support products. The feedback and recommendations gathered at these events were consolidated and will be used in planning for the 2030 RDP.

Feedback was gathered informally through the duration of the 2020 RDP and at numerous conferences where stakeholders were present. Feedback was collected and organized in the sections by five main topics:

- General management of the 2020 RDP.
- Geographic phases of the program (Phases 1 and 2).
- Content and delivery of the Redistricting Data (P.L. 94-171) Summary File and Supporting Products (Phase 3).
- Process of collecting post-2020 Census congressional and state legislative district boundaries (Phase 4).
- Broader policy issues surrounding the decennial census that impact the states' redistricting work. Feedback related to this topic is presented below with the phases to which it was related.

### **GENERAL PROGRAM MANAGEMENT**

#### **Communication**

Over the course of the 2020 RDP, states were generally happy with the level and quality of the communication and support they received from the RVDO. They appreciated the RVDO's communication to them on issues that might affect redistricting,

such as any changes to the Office of Management and Budget's (OMB) standards for reporting race and ethnicity data and the Census Bureau's plans to address data disclosure avoidance and how those plans would impact the decennial census data.

They also appreciated in-person and virtual updates on the RDP and decennial census plans provided at NCSL and state capitol kickoff meetings. They saw value in additional state capitol visits when a state has a change in legislative leadership or governor. States recommended that both technical and nontechnical information be provided at these meetings while ensuring the presentation is appropriate for the audience. For state capitol meetings, this might mean separate meetings with people in technical and nontechnical roles, supplemented by virtual meetings as appropriate. If the audience for a specific training or meeting are legislators, they also recommended ensuring such meetings are scheduled outside of the legislative session.

Table 1.

**Formal 2020 Redistricting Data Program (RDP) Feedback Sessions**

Venue/Host	Session Date	Primary Topic
Redistricting Data Seminar—Salt Lake City, UT/National Conference of State Legislatures (NCSL)	July 14, 2021	Phases 1 and 2: Black Boundary Suggestion Project (BBSP) and Voting District Project (VTDP)
NCSL Census Update Webinar/NCSL	August 27, 2021	Phase 3: Redistricting Data (P.L. 94-171) Summary File and Geographic Products Content and Delivery, and the Count Question Resolution program
NCSL Annual Legislative Summit—Tampa, FL/NCSL	November 4, 2021	Plans for Phase 4: Collection of Post-2020 Census Redistricting Plans and Phase 5: Evaluation of the 2020 RDP and Recommendations for the 2030 Census
Virtual/Census Bureau	March 15, 2022	Phases 1 and 2: BBSP and VTDP
Virtual/Census Bureau	March 31, 2022	Phases 1 and 2: BBSP and VTDP
Virtual/Census Bureau	April 6, 2022	Phase 3: Redistricting Data (P.L. 94-171) Summary File and Geographic Products Content and Delivery
Virtual/Census Bureau	May 10, 2022	Phase 3: Redistricting Data (P.L. 94-171) Summary File and Geographic Products Content and Delivery
Virtual/Census Bureau	June 9, 2022	Policy: Looking Ahead to the 2030 Census: Issues to Consider
Virtual/Census Bureau	June 14, 2022	Policy: Looking Ahead to the 2030 Census: Issues to Consider
NCSL Annual Legislative Summit—Denver, CO/NCSL	August 4, 2022	Policy: Looking Ahead to the 2030 Census: Issues to Consider

Source: U.S. Census Bureau, Redistricting Data Program.

---

## Liaisons

To ensure that the most appropriate and qualified people are selected for the official liaison role, states recommended that the Census Bureau provide a detailed description of the liaisons' duties in its solicitation letter to the governors and legislative leadership. This would provide state officials with the information they need to select the best person for the role. It should also be clear in the letters that official liaisons (once appointed) can designate technical staff to work on and submit Block Boundary Suggestion Project (BBSP), Voting District Project (VTDP), Congressional District (CD), and State Legislative District (SLD) updates to the Census Bureau.

They also recommended the Census Bureau begin recruiting for liaisons earlier in the decade and work with NCSL to advertise to legislators the importance of appointing a qualified, nonpartisan liaison. Once liaisons are onboarded, the Census Bureau should have a kickoff meeting with all liaisons and conduct virtual meetings and trainings with liaisons throughout the duration of the program. This would help them stay informed and share ideas, tips, and information with each other. The 2020 RDP liaisons saw many opportunities to learn from each other and would like a forum to share information and communicate throughout the 2030 program.

## GEOGRAPHIC PHASES OF THE PROGRAM (PHASES 1 AND 2—BBSP AND VTDP)

### Census Block Creation and Prototype Blocks

The Census Bureau uses a robust algorithm to create meaningful census blocks. In an initial pass, the algorithm looks for all eligible visible and nonvisible features in the MAF/TIGER System that could be a census block boundary and creates a census block each time those features create a polygon. It then applies various merge criteria to merge census blocks, where it makes sense, to create the final census blocks. States were generally happy with how the algorithm worked for creating the 2020 census blocks and with the improvements made to it since the 2010 Census. However, they would like to continue experiencing improvement in ensuring highway medians do not become census blocks and to eliminate or reduce census blocks within other census blocks. They also suggested incorporating the use of parcel boundaries in the creation process, so a census block boundary would never split a parcel.

Materials provided to the states for the Phase 1 and Phase 2 delineation and verification stages included prototype blocks. The Census Bureau ran the census block creation algorithm on the MAF/TIGER System data as it existed at that time and supplied the results—prototype blocks—to the states. The intention was to show the states what the census blocks would be if the Census Bureau did not solicit states' BBSP flags. This helped them identify where they would want to set any "must hold" or "do not hold"

flags to get the census blocks they believed were needed for future redistricting. States found prototype blocks very useful for doing their BBSP work, however, some were not aware they were included with the program materials provided and suggested the RVDO better communicate their availability.

### Communicating Block Boundary Eligibility

States were sometimes frustrated when the "must hold" or "do not hold" flags were not accepted by the Census Bureau. They suggested the Census Bureau provide some explanation during the BBSP verification stage as to why certain flags were not accepted, perhaps by adding a flag that would explain the reason for the rejection. Additionally, they requested the Census Bureau provide better information about which linear features are ineligible for a "do not hold" flag when the program materials are first provided, perhaps by adding a field to the files that tells the user if a feature is eligible for deletion. At a minimum, RVDO should communicate better to participants the general rules for when features can and cannot be deleted.

### Maintaining VTDs Throughout the Decade

The Census Bureau has collected VTD boundaries from the states that wish to provide them since the 1980 RDP so that data from the decennial census immediately following the collection could be provided for those VTDs. Once the decennial data for these VTDs have been released, the VTD boundaries are removed from current vintages of the

---

MAF/TIGER System, and no updated data for VTDs are released. Following the 2020 Census, states were divided in their opinions on whether the Census Bureau should maintain VTD boundaries throughout the decade. Some desired to have updated data throughout the decade, and others argued that VTDs change too frequently for the states to keep up with submitting annual or biennial updates. Some states noted that collecting the boundary data from local election officials so they could then report it to the Census Bureau would be too difficult and time-consuming, particularly weighed against the need for intercensal data.

States were also divided on whether the Census Bureau should attempt to maintain VTD vintages. For the 2020 Census, the Census Bureau did not collect VTDs for a specific vintage (e.g., for a specific year's election) to allow states flexibility in what to provide, as states have different needs from their VTD level data for the purposes of redistricting.

### **The Geographic Update Partnership Software (GUPS)**

The Census Bureau provided GUPS, as an optional tool, to all states for use in delineating and submitting their census block boundary suggestions and VTD boundaries. GUPS was built by the Census Bureau using QGIS, an open-source geographic information system (GIS). GUPS also had capabilities that allowed states to submit feature and boundary updates to other geographic areas, including places, counties, and minor civil divisions (e.g., townships, towns). States generally were happy with

the GUPS software and saw it as a great improvement over the software provided in the 2010 RDP. They requested the software not change again for 2030, as this would create a new learning curve for returning liaisons and the technical staff they designated to do the work. Some states chose to use their own GIS to create their 2020 RDP submissions and would like that to remain an option in the 2030 RDP. States also suggested adding the option of allowing parcel to VTD equivalency files to submit VTD boundaries.

Although the states were favorable in their opinions about GUPS, they did have some suggestions for functionality improvements and enhancements. These included:

- Developing additional ways to add features and split polygons.
- Allowing users to make small positional changes without encountering topological errors.
- Integrating more QGIS functionality and plugins to work in GUPS.
- Allowing multiple users to update the same GUPS file simultaneously.
- Allowing states to edit address ranges.
- Developing a web version of GUPS.

### **Phase Timing**

All states preferred having BBSP and VTDP conducted as separate phases of the 2020 RDP. They were divided on whether they preferred the BBSP or the VTDP to occur first in the decade.

However, there were more states that indicated a preference for doing BBSP first, as long as BBSP updates could still be provided during VTDP. States preferring to do BBSP first noted that VTDs can change frequently, and they would prefer to wait until closer to the decennial census to provide the boundaries they would want to use for decennial data tabulation. States arguing for conducting VTDP first noted that having updated VTDs in the data they are using to set BBSP flags allows them to review relationships and make better decisions in BBSP.

States were also divided in their opinions on the time of the calendar year the VTDP and BBSP work should occur. Most, however, voted for a January to May timeline, where they had additional time (5 months total) to make updates. The minority that voted for a July to September timeline argued that it was easier to complete their work at that time because their state legislatures are out of session, and they have more time to devote to the update cycles. Several states expressed they could make either timeframe work.

### **Updates to Other Geographies**

Although the purpose of the BBSP and VTDP is for the Census Bureau to collect census block boundary suggestions and voting district boundaries, these potential census blocks and VTD boundaries are often related to other features and administrative and legal geographic boundaries and landmarks such as counties, incorporated places, towns, school districts, or military bases. For example, a voting district boundary might be shared with an incorporated place, or a state

might wish to flag a stream as a “must hold” to ensure that stream will be a census block boundary. It can be difficult for liaisons working on RDP to do their BBSP or VTDP work effectively if the underlying geography is not accurate. Because the Census Bureau partners with different state and local agencies and offices for receiving updates for these other features and boundaries, there are sometimes conflicts between geographic updates submitted (or not submitted) by partners in other geographic programs, such as the Boundary and Annexation Survey (BAS), and VTDP or BBSP updates submitted by liaisons.

To resolve this, the 2020 RDP allowed states to make updates to linear features such as roads, rails, and linear water features; area landmarks (e.g., parks and lakes); point landmarks (e.g., monuments); and to suggest updates to legal boundaries during BBSP and VTDP. The legal boundary updates were reviewed by the Census Bureau’s BAS team and confirmed by the state and local BAS partners before being accepted and incorporated into the MAF/TIGER System. States participating in the RDP were very much in favor of continuing this collaboration in the 2030 RDP, although they indicated little need to update point landmarks.

In addition to making updates to area landmarks and legal geography during BBSP and VTDP, they recommend that the RVDO facilitate even better coordination between RDP liaisons and other geographic program participants to avoid duplicated efforts. They recommend providing liaison



U.S. Census Bureau staff train 2020 Census Redistricting Data Program participants in Bismarck, ND.

contact information to BAS participants and providing BAS contact information to liaisons and elections administrators who might be dealing with inaccurate boundaries impacting their election work.

Additionally, states recommend the Census Bureau continue to include an option for updating or correcting congressional district and state legislative district boundaries during BBSP and VTDP phases.

### **Materials and Training**

States felt the RVDO-provided BBSP and VTDP guides, GUPS, shapefiles, instructions, checklists, and other materials provided to them to assist their work were generally helpful, but they did not typically use the hard copy printed materials, software discs and data discs shipped to them. Instead, most used online PDF versions of the materials and downloaded GUPS and data from the Census Bureau’s website. They also found the RVDO trainings on

the program and the software to be helpful but would like training to be conducted earlier with a variety of training options offered, including in-person, virtual, recorded, and video tutorials.

### **MAF/TIGER System**

All census block boundary suggestions and voting district boundary submissions must be integrated with data already in the Census Bureau’s MAF/TIGER System. For this reason, states are very interested in ensuring the quality and spatial accuracy of the data in the MAF/TIGER System. They recommend that the Census Bureau continue to improve the inventory and spatial accuracy of features and boundaries that could be or are commonly used for census block boundaries, including area landmark boundaries (e.g., military base boundaries); roads; railroads; power lines; water features and other physical geography (glaciers, rivers, shorelines). They also recommend that the

MAF/TIGER System be updated to achieve parcel-level accuracy.

States also want their unique nesting and relationship rules between geographies enforced so that VTDs, SLDs, or CDs are or are not moved if the underlying geography changes. For example, if a CD follows an incorporated place boundary, and the place annexes area, or the CD follows a road and the shape of the road is corrected in MAF/TIGER System, the Census Bureau would follow a state-defined relationship rule to determine if the CD boundary should also move. States recommend that the RVDO continue to solicit relationships of VTDs, CDs, and SLDs to other geographies within states, and enforce them.

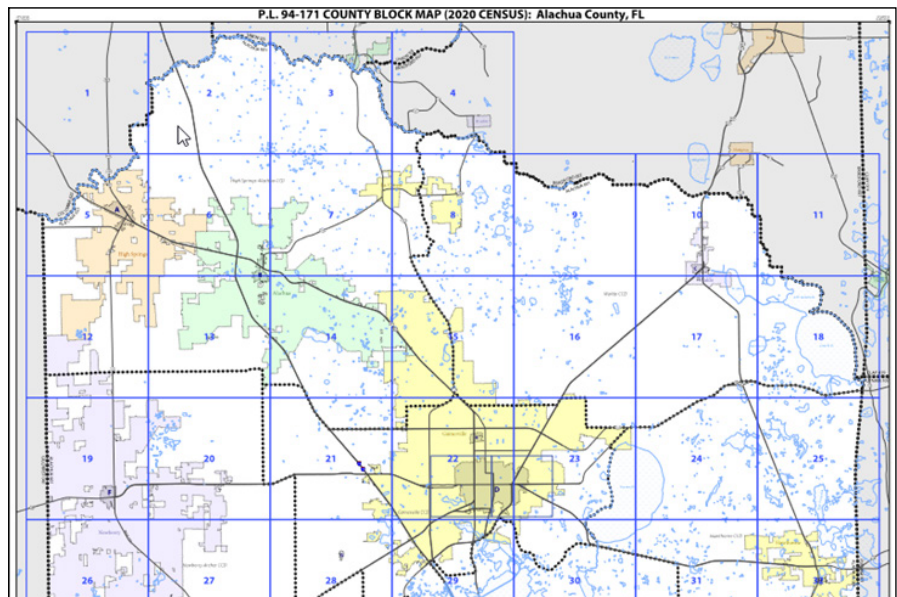
### Verification Phases

States found verification phases of BBSP and VTDP very useful and specifically mentioned how useful the second round of VTD verification (VTDV2) in early 2020 was for allowing them to submit needed last-minute updates.

## CONTENT AND DELIVERY OF THE REDISTRICTING DATA (P.L. 94-171) SUMMARY FILE AND SUPPORTING PRODUCTS (PHASE 3)

### Prototype Products

States found the prototype products from the 2018 End-to-End Census Test, specifically the Redistricting Data (P.L. 94-171) Prototype Summary File and the prototype geographic products, helpful for developing their systems in advance of the 2020 Census data release. If a similar end-to-end census test or dress rehearsal occurs prior to the 2030



Example of a county block map provided as a geographic support product from the 2020 Census Redistricting Data Program.

Census, the states recommend that the Census Bureau release prototype data and geographic products. If no such test occurs, they recommend that the Census Bureau release table shells for the redistricting data in advance of the official 2030 Census data release, so they can develop their systems and are ready to ingest data upon its official release.

### Geographic Support Products

States would like the Census Bureau to continue providing similar geographic support products in 2030 to what was provided with the 2020 Census redistricting data, specifically crosswalks, shapefiles, block assignment files, name lookup tables, and PDF maps. They suggest the Census Bureau consider adding additional geographies to maps if feasible and updating existing dynamic mapping tools with the boundaries. Alaska requested adding federal land, Native Corporation owned land, and local election districts or community

councils to the maps and online mapping tools if feasible.

States also recommend that the RVDO improve communication to them regarding the various ways geographic boundary information is available from the Census Bureau.

### Data Release Schedule

Prior to the 2020 Census, the redistricting data were released by state on a rolling basis. Delays related to the COVID-19 pandemic and changes in 2020 Census data processing procedures impacted processing schedules, and the Census Bureau changed its plans and released the 2020 Census state-based files to all states at the same time. Data were released on August 12, 2021, in our legacy format and on September 16, 2021, on DVD and USB drives and through the Census Bureau's online platform, data.census.gov. States were divided, but slightly more in favor of releasing the redistricting data for each state at the same time in the future,

---

rather than on a rolling basis. They agreed that if data are released on a rolling basis in the future, however, the Census Bureau should give them a minimum of 1 week's notice before the data for their state are released.

### **Embargo**

States would also like an embargo period of the redistricting data, as originally planned for the 2020 Census data releases, so official recipients can access it in advance of the media and public to prepare to respond to the inevitable inquiries. An embargo was planned for the 2020 redistricting data release, but due to the pandemic-related delay in releasing the data, the embargo period for state officials was suspended to avoid any additional delays in releasing the data to the public.

### **Data Format**

States want the Census Bureau to continue to release the redistricting data on both data.census.gov and in legacy format on the Census Bureau's FTP website, with the same support materials provided in 2020 to assist states with importing the data into state databases (e.g., Microsoft Access table shells, SAS and R-code import scripts, and header files). Releasing the data in both formats was useful in accommodating different types of data users. Data.census.gov was widely used by the media and other data users. Although states found that data.census.gov had a learning curve and it was sometimes difficult to find tables needed, they stated they grew to like it for light uses, scrolling between vintages, and finding data for

many states at once. They did find that the search algorithm in the application could be improved. States tended to use the legacy format for their redistricting work, as they found it easier to pull the data into their databases and it allowed them to have databases and queries prepared. They recommended prejoining the geoheader in the legacy format to the data segments to improve ease of use.

States did not generally use the redistricting data and geographic data provided on removeable media (DVD and USB drive), or they used it only in a limited capacity. They also expressed interest or were open to having the redistricting data and geographic products released in alternative ways, such as GeoPackages, assuming any such plans are communicated to them in advance.

If state data are released in the legacy format, on data.census.gov, or in any other additional format in the future, states request all formats be released on the same day. Releasing the redistricting data on two separate days (first in legacy format, second on data.census.gov) more than a month apart was problematic for states that have a legal requirement to complete redistricting within a legally defined number of days after data are released. With two release dates in 2021, there was confusion in some of these states as to which release triggered the countdown to begin.

### **Geography**

States overwhelmingly request that redistricting data be

available at the census block level, as courts have traditionally expected single person deviations for congressional districts and  $\pm 5$  percent or less deviations for state legislative districts. Census blocks are also needed to create communities of interest and compact districts, particularly in rural areas. Additionally, census blocks are used by smaller governments (e.g., cities and counties) for their local redistricting. Census blocks are currently the only geographies that can be assembled to create districts meeting these requirements. States want to ensure the Census Bureau continues to provide data for states, counties or equivalent areas, state legislative districts, voting districts, county subdivisions, school districts, places, American Indian areas, Alaska Native areas, Native Hawaiian areas, urban growth areas, census tracts, block groups, and census blocks.

### **Tables**

States will continue to require the data available in the P1, P2, P3, and P4 tables included in the 2020 redistricting data (Table 2), which included breakdowns by race and ethnicity groups, to meet federal and state Voting Rights Act requirements and requirements for majority/minority districts.

Some states indicated that while "alone" and "alone-or-in-combination" race data are used for redistricting, states only need those totals (maximum/minimum counts by race and ethnicity), not all the individual combination counts. Other states noted, however, that OMB Bulletin 00-02, Guidance on Aggregation and

Table 2.

**2020 Census Redistricting Data (P.L. 94-171) Summary File**

Table Number	Table Description
P1	Race
P2	Hispanic or Latino, and not Hispanic or Latino by Race
P3	Race for the Population 18 Years and Over
P4	Hispanic or Latino, and not Hispanic or Latino by Race for the Population 18 Years and Over
P5	Group Quarters Population by Major Group Quarters Type
H1	Occupancy Status (Housing)

Allocation of Data on Race for Use in Civil Rights Monitoring and Enforcement, requires being able to differentiate (for example) non-Hispanic Black alone, Hispanic Black, Black or African American and White in combination, and Black in combination with something other than White. They recommend that the Census Bureau conduct additional research to determine what race/ethnicity combinations states will require to meet the law and allow for compliance with other federal statistics requirements such as OMB Bulletin 00-02 or future OMB guidance.

States did express concern that there is confusion among data users as to the differences between tables in the redistricting data, especially between the Hispanic or Latino and the non-Hispanic or Latino data tables. They suggest providing more assistance to public data users on understanding the difference between Hispanic and non-Hispanic data tables and researching the pros and cons of merging the race and ethnicity tables into one table. They also suggest the Census Bureau and OMB continue researching why respondents choose the

“Some Other Race” category and whether adding or revising other response options would reduce use of “Some Other Race.”

States were aware that the OMB convened the Federal Interagency Technical Working Group on Race and Ethnicity Standards to review and develop recommendations revising OMB’s 1997 Statistical Policy Directive No. 15 (Directive No. 15): Standards for Maintaining, Collecting, and Presenting Federal Data on Race and Ethnicity. They suggested including representatives from the redistricting community on the OMB technical working group. They asked that the RDP keep them informed regarding changes to Directive 15.

States would like the Census Bureau to continue providing the H1 table in the redistricting data, including the vacant and occupied counts down to the census block level, keeping the counts invariant. Similarly, they recommend the Census Bureau continue to include GQ data (Table P5) in the redistricting data but make the total population data invariant, keep the GQ type invariant, and include more characteristics

(particularly race data) and detailed GQ types.

States have concerns that changes in the Redistricting Data (P.L. 94-171) Summary File’s format or content could interfere with their ability to compare data over time and recommend the Census Bureau discuss potential changes to the redistricting data tables with them prior to making any final changes.

States also have concerns that the redistricting data are not corrected when errors are identified. They suggest adding corrections—beyond just errata—for changes to the decennial data post-census. They also had concerns that group quarters (GQ) did not always appear to be geocoded to the correct census block in the data and ask the Census Bureau to better ensure GQs are precisely geocoded.

**Data Disclosure Avoidance**

States had concerns and faced unexpected challenges due to the application of a data disclosure avoidance system based on differential privacy to the 2020 Census data. They are concerned about how the use of differential privacy impacted census block populations and other geographic

---

areas with small populations. They were highly concerned that the use of differential privacy, which adds “noise” or variations from the actual count, significantly affected whether data for these small areas were reliable for meeting the constitutional requirement for population balance in small jurisdictions. In some states, state law requires no more than a 5 percent variance between district populations—in some cities it is as low as one percent—and states were concerned that the mean absolute error between the enumerated counts and the noise infused counts would exceed that 5 percent.

States also had concerns about the disconnect between census block-level total housing unit counts, which are held invariant, and census block-level population, which are variant, and about implausible values at the census block level (e.g., census blocks with population only under the age of 18, census blocks with a high number of people per household). They said they appreciated that the Census Bureau kept census block data consistent when aggregated up to larger geographic areas (e.g., all census block count totals within a place added up to the published population of the place).

States recommend that the Census Bureau conduct additional research into the implications differential privacy has on local jurisdictions with small population election districts and how that affects whether the protected counts are reliable for meeting the requirement for population balance.

They further recommend that the Census Bureau reevaluate the

use of differential privacy as its disclosure avoidance system, look at alternative solutions, and try to find a “middle ground” solution to data disclosure avoidance. They further recommend that state and local governments be included in discussions on any data disclosure avoidance policy changes as soon as those discussions begin.

If differential privacy continues to be used for the 2030 Census results, states would like the Census Bureau to consider holding county population as invariant, as some states have large numbers of counties with small populations. They would also like to have GQ population counts, particularly prisons and college GQs, held invariant at the block level. This would assist those states required to reallocate prisoner and college student populations.

States were divided, however, on whether the Census Bureau should include error statistics with the data if 2030 data are protected using differential privacy. (These statistics were published in Data Disclosure Avoidance System educational materials for 2020 data.) The concern with including error statistics was that it could create confusion for some data users, and most stakeholders want to ensure there is only one singular official count released by the Census Bureau for redistricting data.

States continue to express some frustrations with the limitations Title 13 places on the data shared between the Census Bureau and the states. States recommend the Census Bureau reevaluate its interpretation of Title 13 and how it can be applied.

## **Prisoner Reallocation**

Because the Census Bureau’s residence criteria, which define where the Census Bureau counts people in the decennial census, require people to be counted where they live and sleep most of the time, prisoners are counted in the facility where they are incarcerated at the time of the census. Some states, however, are required by their own laws to reallocate their prisoner population from the prison address to some other specified “home” address, before conducting redistricting. State laws vary as to when and how to reallocate prisoners, including but not limited to, how to define “home” address; how or if to reallocate prisoners whose “home” address is missing, incomplete, or in another state; and how or if to reallocate prisoners in federal prisons.

The Census Bureau has a public facing geocoding tool that states can use to assist them in their reallocations of the prisoner population. Users enter the prison address and the prisoner’s home address to identify the census blocks for each. Then, states could reallocate the counts from the census block containing the prison to the home address block. Feedback from the states indicated that they found the Census Bureau’s public geocoder tool useful for reallocating populations as required by their state laws, but they would like the ability to input more addresses at one time, beyond what the geocoder can currently accommodate.

Some states have suggested that the Census Bureau perform

---

prisoner reallocation for the states and release population counts after that reallocation has occurred. These states believe that as a federal agency, the Census Bureau is in a better position to handle cross-state border issues (i.e., prisoner incarcerated in a different state from their “home” address) and acquiring data on prisoners in federal custody. They believe the Census Bureau would also have experience handling the fact that many prison facilities do not always collect race and address data in a standardized way. Race categories collected or maintained by prison facilities do not always comply with OMB’s Directive No. 15 standards for collecting and publishing race data used by the Census Bureau, making it difficult to know how to reallocate the race data from one block to another.

If the states continue to conduct prisoner reallocation themselves, some requested that the Census Bureau create a repository of different approaches/best practices for getting addresses for prisoners and guidance for how to handle incomplete or multiple prisoner address situations. They also suggest that the Census Bureau share standards the Census Bureau uses for required person data elements in decennial census responses and supply them to state departments of corrections.

Additionally, some states suggested that someone, possibly NCSL, should research the various laws states have on prisoner reallocation (e.g., what data are needed, what address should prisoners be reallocated to) and research how and what data

are collected by the corrections departments in those states.

### **Prisoner Reallocation and Differential Privacy**

The application of differential privacy protections to GQ population counts created challenges for states required by state law to reallocate the prisoner population, because state administrative data they used to reallocate had actual populations for the prison facilities, but the census GQ counts for the census blocks where those prisons were located had variant population totals. For this reason, states ask that if differential privacy is used again in 2030, GQ population, particularly in prison and college GQs, is held invariant at the census block level.

If the Census Bureau applies differential privacy and does not hold the GQ population invariant at the block level, states suggested the Census Bureau should reallocate the prisoner population and provide those counts, as individual state law requires, since the differential privacy methods make it very difficult for them to do it themselves.

### **Residence Criteria and Situations**

States supported the change for the 2020 Census Residence Criteria and Situations to differentiate military populations deployed versus stationed overseas. This change was to count overseas deployed military where they are stationed stateside, and those stationed overseas as part of the overseas military and federally affiliated population. In the 2010 Census,

both were counted as part of the overseas military and federally affiliated population. They also suggested using the same residence criteria for deployed and stationed military personnel in the decennial census and the American Community Survey (ACS). This is especially important since the Citizen Voting Age Population tabulations, which are used in conjunction with decennial data in voting rights enforcement work, are created using ACS data.

Some states, particularly Alaska, had concerns that the Census Bureau is not consistent with how they count workers in remote worksites (i.e., oil field workers). They claim the data suggest the residence criteria are being misapplied and applied differently from census to census. States recommend ensuring consistent and appropriate application of the residence criteria and situations regarding workers at remote work sites.

Finally, states were concerned with how the Census Bureau enumerated private dormitories in college areas and questioned if it was consistent with how traditional dormitories were enumerated. They recommend the Census Bureau reevaluate and clarify how they classify and count “nonofficial” or private dormitories in college areas.

### **Supporting Documentation Provided by the Census Bureau**

States were satisfied with the technical documentation that accompanied the redistricting data. They were also complimentary of the “Strength in Numbers” publication produced by the RVDO, which describes

---

how the redistricting data are used. They suggested the RVDO create a new version for 2030 and publicize it more widely.

States also liked the Tableau visualizations released with the redistricting data. They found them helpful for use when talking to the press and in making comparisons with other states. They suggest the Census Bureau consider adding additional geographic levels to the visualizations and making them available on the same day as the redistricting data release.

#### **PROCESS OF COLLECTING POST-2020 CENSUS CONGRESSIONAL AND STATE LEGISLATIVE DISTRICT BOUNDARIES (PHASE 4)**

After the redistricting data were released and the people responsible for delineating a state's congressional and state legislative districts completed their work, the official RDP liaisons submitted these delineations to the Census Bureau. Submissions were generally a block

equivalency file (BEF, i.e., a list of all census blocks in the state, and the CD and SLD[s] it was a part of). In the rare cases where a census block was split between more than one congressional or state legislative district, the states used the GUPS to flag an existing or delineate a new line to show where the census block was split and submitted a spatial output file to the Census Bureau. The Census Bureau then ingested the new boundaries into the MAF/TIGER System. Because data can never be tabulated for a census block part, the states who split census blocks in their redistricting plan also indicated to the Census Bureau their preference for which districts the split census block data should be tabulated.

#### **Submission Procedures**

Although the Census Bureau provided written procedures to the states that outlined the formats for the BEFs, submissions from the states did not always follow proper formatting and other submission requirements. To improve Phase 4 submissions, states recommend the RVDO conduct a webinar for liaisons showing proper submission procedures, and an explanation of how the RVDO processes those submissions.

When sending BEFs to states as part of Phase 4, it was also requested that the RVDO should include the complete, unique block code (also known as the unique GEOID) as well as the comma delimited state, county, census block, and district codes.



Chapter 4.

# The Census Bureau’s Response and Early Plans for the 2030 Redistricting Data Program

Based on experience and feedback from the states on the 2020 Census and the Redistricting Data Program (RDP), the U.S. Census Bureau is not considering any major changes to the program for 2030. The 2030 RDP is planned to be conducted through the same five phases the program was organized into for 2020, over the course of 5 years (2026–2030) and in accordance with Public Law 94-171 (P.L. 94-171). Key milestones and the

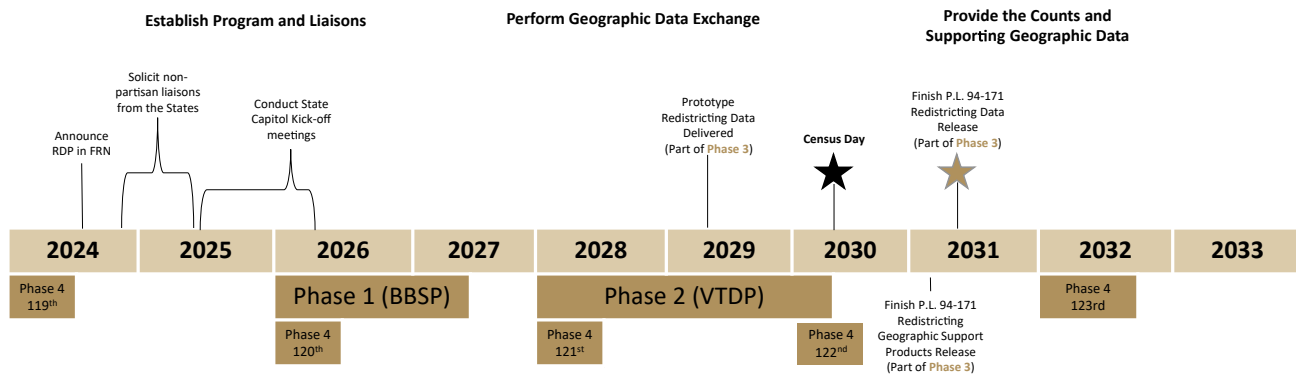
five phases of the program with expected duration periods are located in Figure 2. Although the 2030 RDP will be conducted in a similar manner as the 2020 RDP, the Census Bureau will make improvements to each phase in response to state feedback. More specific plans are described in the following subsections of Chapter 4.

## GENERAL PROGRAM MANAGEMENT

### Liaison Selection

The 2030 RDP officially begins with an announcement in the Federal Register of the program’s establishment (Appendix E). The Redistricting and Voting rights Data Office (RVDO) contacts the governor and the legislative leadership in each state requesting them to designate a nonpartisan liaison.

Figure 2.  
2030 Census Redistricting Data Program Activities Timeline



### Five Phases of the 2030 Redistricting Data Program (RDP)

- Phase 1 – The Block Boundary Suggestion Project (BBSP)
- Phase 2 – The Voting District Project (VTDP)
- Phase 3 – Delivery of the P.L. 94-171 Redistricting Data and Geographic Support Products
- Phase 4 – The Collection of Congressional and State Legislative Districts (CD/SLD)
- Phase 5 – The Review of the 2030 RDP and the Look-Ahead to the 2040 RDP (The View From the States)



V. 2023-07-24

The nonpartisan state liaison serves as the primary point of contact between the Census Bureau and the state for the RDP throughout the program's life cycle. The RVDO accepts the states' post-2020 Census recommendation to provide to the governors and legislative leadership a more detailed description of the liaison's duties and suggestions for the type of skills a liaison would need to be effective. This would ensure that the most qualified candidates are selected for the role, and make clear that the official liaison can designate technical staff to submit Block Boundary Suggestion Project (BBSP) and Voting District Project (VTDP) updates to the Census Bureau.

Once the liaisons are selected, the Census Bureau will schedule a kickoff meeting with all liaisons to communicate the requirements of their role. Additional meetings will be held periodically throughout the program to ensure important information is being communicated and to allow liaisons to interact and learn from each other. The Census Bureau will also research developing a forum that would allow liaisons to communicate with each other at any time to troubleshoot, share ideas, and resolve issues. This was a suggestion of the 2020 RDP liaisons that the Census Bureau gladly accepts.

### **Communication**

The RVDO will maintain the same centralized office structure it had for the 2020 RDP and continue communicating to the states with similar frequency and level of detail throughout the program, while also incorporating the suggestions of the states



Census Bureau staff attend a meeting with Redistricting Data Program participants at the Nevada State Capitol in Carson City, Nevada.

for improving communication and support. At the liaisons' invitations, the RVDO and other Census Bureau staff will be available to conduct state capitol kickoff meetings about the program with executive and legislative leadership and staff at a time that suits their schedules. Additional meetings throughout the course of the RDP can be arranged at the states' request should there be changes in leadership or staff. The RVDO will work with the states to ensure the material presented at these meetings is appropriately technical or nontechnical for the audience. The RVDO will also communicate with the states throughout the program at National Conference of State Legislatures (NCSL) meetings, through email, and voluntary in-person and virtual meetings and trainings.

The RVDO is committed to keeping states informed, through the aforementioned channels, about any developments related to the announced revision to the Office of Management and

Budget's (OMB) Directive No. 15, data disclosure avoidance plans and methodologies, operational plans for the 2030 Census, and any other census-related topics that would be of interest to the redistricting community.

## **GEOGRAPHIC PHASES OF THE PROGRAM (PHASES 1 AND 2)**

### **Phase Timing**

Given the success of the 2020 RDP and the fact that most states expressing an opinion favored a 2030 timeline like the 2020 RDP, the RVDO plans to use a similar timeline and order of phases for the 2030 RDP. BBSP (Phase 1) will be conducted prior to VTDP (Phase 2), and states will have from January to May to submit their block boundary suggestions and voting district boundaries. At the states' request, block boundary suggestions will still be permitted during the VTDP phases. States will also be permitted to submit geographic updates for other legally defined census entities during Phase 1 and Phase 2 and submit updates

Table 3.

**Schedule and Milestone Dates for the 2030 Redistricting Data Program (RDP)**

<b>Date</b>	<b>Activity</b>
July 9, 2024	2030 RDP announced in the Federal Register.
Winter 2025–Spring 2025	Redistricting and Voting rights Data Office (RVDO) solicits states for non-partisan liaison.
Summer 2025–Spring 2026	RVDO conducts state kickoff meetings.
January 2026–May 2026	Phase 1—Block Boundary Suggestion Project (BBSP) RVDO collects block boundary suggestions from the states.
January 2027–May 2027	Phase 1—(BBSP Verification) RVDO verifies block boundary suggestions with the states.
January 2028–May 2028	Phase 2—Voting District Project (VTD) RVDO collects voting district boundaries from the states.
January 2029–May 2029	Phase 2—(VTD Verification) RVDO verifies voting district boundaries with the states.
January 2030–March 2030	Phase 2—(VTD Verification 2) RVDO conducts final verification with the states.
April 1, 2030	Census Day.
January 2031–March 2031	Phase 3—2030 Census Geographic Support Products delivered to the states.
February 2031–March 2031 (No later than April 1, 2031)	Phase 3—2030 Census Redistricting Data (P.L. 94-171) Summary File delivered to states.
Fall 2031–Spring 2032 <sup>1</sup>	Phase 4—RVDO collects Post-2030 Census Redistricted Congressional and State Legislative District plans from the states.
December 2034	Phase 5—RVDO releases The 2030 Redistricting Data Program—The View From the States, an evaluation of the 2030 Census RDP and recommendations for the 2040 Census.

<sup>1</sup> CD and SLD plans will be collected from January through May of even numbered years throughout the decade from states that have changes to their CD or SLD plans.

Source: U.S. Census Bureau, Redistricting Data Program.

to congressional and state legislative districts in Phase 2. Both BBSP and VTDP will have initial delineation and verification stages, and the Census Bureau will continue to offer a second verification stage for VTDs (VTDV2) as they did in 2020. The 2030 RDP timeline is described in Table 3.

The 2030 RDP, like the 2020 RDP, will permit states to submit updates to linear features such as roads, railways, and rivers; area landmarks (e.g., parks and lakes); and suggested updates to legal boundaries. Point

landmark updates will no longer be accepted as very few were submitted for 2020 and they are not relevant to redistricting geography. The ability to make linear feature, area landmark, and legal boundary updates will assist states in making more accurate block boundary suggestions and voting district boundary updates that will better integrate with other geographies. As it was in 2020, however, all updates to visible linear features, landmarks, and legal boundaries will be reviewed by Census Bureau staff to ensure they meet required criteria. In particular,

legal boundary updates will be reviewed by the Geography Division's Boundary and Annexation Survey (BAS) team.

The BAS will continue to be the primary program for submitting legal boundary updates, and updates submitted by RDP state liaisons will have to be agreed to by the official BAS respondent at the state or local level. The RVDO will work with the BAS team to facilitate coordination between RDP state liaisons and BAS respondents to ensure agreement and avoid duplicated efforts, by providing

---

BAS contact information to the liaisons upon request. The RVDO will also supply BAS respondent contact information to elections administrators, as recommend by the states, to any election administrator who requests it by contacting the RVDO office. This will assist the elections administrators in their efforts to improve boundaries impacting their election work.

The Census Bureau will continue to allow states the ability to update or correct congressional and state legislative district boundaries during VTDP when the voting district boundaries relate to the CD or SLD boundary and the CD or SLD boundary needs to be corrected to ensure the VTD boundary is also accurate and the relationships between the geographies are maintained.

### **The Geographic Update Partnership Software (GUPS)**

The RVDO will continue to provide the GUPS to state participants in the 2030 RDP and will encourage its use in BBSP and VTDP. However, states will continue to have the option of using their own GIS to create submissions, following the RDP submission procedures and guidelines. The Census Bureau is also currently developing a web-based version of GUPS, which is eventually planned to include BBSP and VTDP functionality.

States recommended several updates and enhancements to the GUPS. The Census Bureau is continuously working to improve the GUPS user experience, but all enhancements and the development of a web version of the software must be balanced with resource availability

throughout the decade.

The RVDO will continue to work with states to determine what would be most beneficial to them while balancing resource constraints.

Specific improvements to GUPS recommended by the states will also have to be researched to determine if that functionality can be implemented into the GUPS tool in a manner that is feasible and effective for use by participants in providing their updates. Some recommendations have already been researched and rejected because they would be very difficult or even inappropriate to implement in a topologically integrated database like the MAF/TIGER System. Implementation would allow submissions to be created that would result in an unmanageable number of duplicate lines and slivers or would have other unintended consequences. These include adding a tracing function, the ability to cut and paste features into GUPS, and splitting polygons without creating a new line.

The GUPS tool is built on QGIS, an open-source GIS software. According to state feedback, there are plugins that work with QGIS but do not necessarily work with GUPS. The RVDO is aware of some plugins that do work with GUPS and will therefore do further research to identify other specific plugins users desire that are not currently functional in GUPS and determine the feasibility of including them. Some other suggested enhancements will also need to be researched to determine if the QGIS-based platform can accommodate those functionalities.

Some state users also claimed that mapping layouts available in QGIS were not available in GUPS for states to use to create maps for local governments. A mapping function was included with GUPS, but the RVDO will research including QGIS mapping layouts.

States also indicated their frustration with the number of topological errors they encountered in making small positional changes and requested that spatial tolerances in GUPS be improved. The Census Bureau is conducting research into tolerances as the Census Bureau develops new versions of GUPS, and continually works on improving the quality of the data in the MAF/TIGER System.

Finally, states expressed an interest in editing address ranges in GUPS and being able to view address ranges for a feature without having to edit it. The RVDO does not plan to take any action on this item, as the collection of address ranges are out of scope for the RDP, and address ranges displayed on shapefiles provided are updated via other processes. These other processes would overwrite any updates states would make through the RDP. Address ranges are displayed only as a reference for the GUPS users.

States also requested the option of allowing parcel to VTD equivalency files to submit VTD boundaries. This is currently not possible, as the MAF/TIGER System does not have a complete, authoritative parcel level dataset. The Census Bureau's Geography Division is currently researching this, however, and at some point, this may be a possibility.

---

Until then, a user can create a VTD boundary with their own parcel dataset and VTD to parcel equivalency file and use the results to bring that VTD boundary layer into GUPS to create a VTDP submission.

Users also requested the ability for multiple users to update the same GUPS file. In 2020, this was possible using the “Share with Participant” tool, but only one person was able to work on the file at one time, and the file had to be generated, packaged, and imported into the GUPS separately by the other user once the initial user was no longer working on it. Although the web version of GUPS for RDP is still in its infancy, the planned functionality for it should streamline this process.

Some of the RDP’s state liaisons or the technical staff appointed by them, work on other Census Bureau geographic update programs that also use GUPS. These users found it challenging when new versions of the software were released for different programs, requiring them to store multiple versions of the software on their computers. While the Census Bureau will make every effort to minimize this, necessary updates may require release of new versions of the software during the program’s life cycle. Again, should the web version of GUPS come to fruition as hoped, the issue of installing new versions on desktops will be alleviated.

Some GUPS enhancements recommended by the states during our listening sessions were already available in the GUPS software versions used for

the 2020 RDP. This included the ability for users to import their own layers into a GUPS project, including parcel layers. The RVDO will work to communicate better to the state liaisons the functionality and available features in GUPS through training and instruction manuals. The RVDO will continue to provide them with manuals and checklists to assist with their work, but in digital formats only. States indicated they typically did not use the printed materials shipped to them.

### **Census Block Creation and Prototype Blocks**

Some states indicated they were unaware of the availability of the prototype blocks. Those that were aware found them very useful. Based on state feedback, the RVDO will continue to provide prototype block shapefiles in the BBSP and VTDP phases of the 2030 RDP and improve communication to participants about their availability. The Census Bureau will also continue to research ways to improve the block creation algorithm, particularly in minimizing situations where highway medians become blocks, and to eliminate or reduce blocks within blocks. Some states requested that the Census Bureau also incorporate parcel boundaries in the block creation process to ensure that blocks will never split a parcel. Before the Census Bureau can research this suggestion, it must first complete their research into incorporating a complete and authoritative parcel dataset into the MAF/TIGER System.

### **Communicating Block Boundary Eligibility**

Based on state feedback, the RVDO will work to better communicate the general rules for which edges are ineligible for a “must hold” or “do not hold” flag and when edges can and cannot be deleted. Some states suggested marking edges in verification shapefiles where the participant’s “must hold” or “do not hold” suggestions were rejected, with some other flag indicating the reason for the rejection. This is not feasible since the verification shapefiles are created via an automated process in the MAF/TIGER System, and the reasons for a BBSP suggestion’s rejection are not stored in the database. However, the RVDO can provide a reason for BBSP flag rejections on a specific edge upon request.

### **Maintaining VTDs Throughout the Decade**

The Census Bureau will only collect VTD boundaries once a decade (including verification stages) just prior to the decennial census through the VTDP. VTDs will not be maintained through the decade. Decennial data from the 2030 Census will be released for the voting districts collected in Phase 2—VTDP, but no subsequent data for voting districts will be released prior to the next (2040) census. The purpose of the RDP under P.L. 94-171 is to provide redistricting data for post-decennial redistricting. There is no use case supported by that law for maintaining VTDs after post-decennial census redistricting is complete. Furthermore, many states indicated the level of effort

---

involved in submitting updated boundaries to the Census Bureau means they would likely not participate in any Census Bureau program designed to collect them.

The Census Bureau will also not maintain VTD vintages (i.e., ask states to provide voting district boundaries for a specific point in time), to give states the flexibility they desire to submit whatever voting district boundaries they need for the purpose of their post-decennial redistricting.

### **CONTENT AND DELIVERY OF THE P.L. 94-171 REDISTRICTING DATA FILE (PHASE 3)**

The COVID-19 pandemic necessitated some delays and modifications to the original plans the Census Bureau had for delivering the 2020 Census redistricting data. For 2030, the Census Bureau is planning to generally follow what was the original plan for 2020. The Census Bureau is planning few changes to the geographic products, or the content of the redistricting data, except for those needed to comply with the revisions to OMB Directive No. 15 regarding collecting, maintaining, and reporting race and ethnicity data. Changes to the Census Bureau's data disclosure avoidance system may also affect the data. The RVDO will continue to work with states to determine what changes to the data content and format should be made in response to any changes to the Census Bureau's data disclosure avoidance system and for the revised Directive No. 15 and its implementation guidance.

### **Prototype and Geographic Support Products**

The Census Bureau is planning a 2028 Dress Rehearsal field test for the 2030 Census, which will include creation of prototype redistricting data and geographic support products as it did as part of the 2018 End-to-End Census Test.

For the 2030 Census, geographic support products, including crosswalks, shapefiles, block assignment files, name lookup tables, and PDF maps will continue to be released. The Census Bureau will also research adding additional geographies that states have requested to these products. The RVDO will also work to publicize to state liaisons the availability of 2030 Census geographic data as they are released on other Census Bureau applications.

### **Data Release Schedule and Embargos**

States did not seem to have a strong consensus on whether they preferred to have data for all states released at the same time or on a rolling basis. As this has traditionally been decided based on how the data are processed, with an emphasis on providing the data as soon as it is ready, the decision on how to release the data will be deferred until the Census Bureau has finalized plans for processing the decennial data. For the same reasons, the Census Bureau cannot commit at this time that if data are again released in different formats (legacy and on data.census.gov) they would be released on the same day.

States strongly agreed on two other points to which the Census Bureau can agree:

- If data are released on a rolling basis, the Census Bureau will give states a minimum of 1 week's notice before the data for their state are released.
- The Census Bureau will institute an embargo period of the redistricting data so official recipients can access it in advance of the media and public and are prepared to respond to inquiries.

### **Data Format**

The Census Bureau plans to continue to release the redistricting data on both data.census.gov and in legacy format (pipe-delimited) with tools to assist with their use. This is based on state feedback that releasing the data in both formats was useful in accommodating different types of data users, with states tending to use the legacy format for their redistricting, and the media and other data users using data.census.gov. The Census Bureau will also work to prejoin the geoheader file to the data segments in the legacy format for the state's convenience.

States did express some frustration with the data.census.gov search algorithm. The Census Bureau is regularly working to improve our data users' experiences, including ensuring that searches are as efficient and the results are as meaningful as possible.

Since the states indicated they did not generally use the redistricting data and geographic data provided on removable media, the Census Bureau will not plan to release data on removable media in 2030. In anticipation of other technologies becoming available, the Census Bureau

---

will also research and consider additional ways for releasing the data. Any plans for releasing the data in additional formats will be communicated to the states for their feedback in advance of the 2030 Census.

## **Content**

The Census Bureau is not currently planning any changes to the geography for which the decennial data would be released. Small area geography, specifically census blocks and for those states that provide them, voting districts, will be available to ensure states can create legislative areas that meet population deviation requirements, cohesive communities of interest, and meet requirements to create compact districts.

Population counts by race and ethnicity will be available, but specific information on how the data will be presented in the summary file tables is dependent on any changes made to the Census Bureau's data disclosure avoidance system and on the revised OMB Directive No. 15. The Census Bureau also plans to continue to provide a GQ by type table and a housing unit table broken down by vacant and occupied housing unit counts. States have requested that race and ethnicity breakdowns be added to the GQ tables along with more detailed GQ types. The Census Bureau will research the feasibility of this, particularly how to balance this level of detail with our data disclosure avoidance system. Inclusion of race and ethnicity data in the GQ table will also be impacted by the revision to OMB Directive No. 15.

One aspect of the research OMB's technical working group undertook was to better understand the respondents who select "Some Other Race" as their race and how the government can provide them with more meaningful options so the use of "Some Other Race" is minimized. The Census Bureau is committed to continuing discussions with states to determine the best way to format the tables in the redistricting data to report race and ethnicity counts clearly and in compliance with the revised OMB Directive No. 15. These discussions will also address any concerns the states have about changes in the redistricting data format interfering with their ability to compare data over time.

States have communicated to the Census Bureau their concerns that data in the Redistricting Data (P.L. 94-171) Summary File are not corrected when errors are identified. They suggest adding corrections—beyond just errata—for changes to the decennial data postcensus. The Census Bureau is not able to change official counts after they are published but will continue to publish errata for the data users' awareness.

## **Data Disclosure Avoidance**

States had numerous concerns and challenges related to the application of differential privacy to the redistricting data. They were concerned with the impacts on census block population and other geographic areas with small populations. The Census Bureau accepts the states' recommendation to continue research into the implications differential privacy has on local

jurisdictions with small population election districts and how that affects whether the protected counts are reliable for meeting the constitutional requirement for population balance. The Census Bureau is researching the best ways to meet its statutory obligation to protect the confidentiality of individual respondents while meeting the data needs of the redistricting community.

The RVDO is committed to keeping state liaisons informed about any discussions on Census Bureau disclosure avoidance policy changes. The RVDO also recognizes the states' desire to hold county populations (especially those counties with small populations) invariant and GQ population counts, particularly prisons and college GQs, invariant at the block level and will ensure those requests are part of the discussion. The states' desire to continue to have population counts consistent between nested geography (e.g., county population add up to state population) will also be considered.

## **Prisoner Reallocation**

Although some states are requesting that the Census Bureau count prisoners at their "home" address, at present, the Census Bureau's residence criteria requires people to be counted where they live and sleep most of the time (as mentioned in Chapter 3), and therefore prisoners are counted in the facility in which they are incarcerated at the time of the census. The Census Bureau conducts a review of residence rule criteria and situations each

---

decade, however, and will once again review all criteria including how it pertains to the incarcerated population in the 2030 Census.

If the Census Bureau does continue to count prisoners at the prisons where they reside in the 2030 Census, some states have suggested that the Census Bureau separately release reallocated prisoner population counts. The Census Bureau will research associated legal and feasibility issues to determine if the Census Bureau can acquire the necessary data, whether doing so would violate the Census Bureau's Residence Criteria (and the Census Act of 1790 that the Residence Criteria are based on), and how it would impact the Census Bureau's goal of providing only one set of official decennial population counts.

Because the requirement for prisoner reallocation is a matter of state law and specific requirements differ from state to state, the Census Bureau does not plan to create a repository of different approaches/best practices for getting addresses for prisoners and guidance for how to handle incomplete or multiple prisoner address situations as some states suggest. These issues should be addressed in the state law calling for reallocation of prisoner populations.

The Census Bureau plans to continue making the geocoder tool discussed in Chapter 3 available to assist states if they are required to reallocate prisoners and has increased the geocoder's capacity at the states' request, so that more addresses can be submitted at one time.

### **Other Residence Rules Situations**

The Census Bureau plans to continue counting overseas deployed military where they are stationed stateside, and to count military personnel and their families stationed overseas as part of the federally affiliated overseas population. The RVDO will work with the Residence Criteria Review team to make them aware of the state's request to consider using the same residence criteria in the American Community Survey (ACS).

Recommendations to improve the consistency with which residence criteria are applied have been provided to the groups responsible for reviewing the residence rule criteria and guidance to field staff. These include recommendations on how criteria are applied to remote workers and how students living in private versus traditional dormitories are enumerated. Additionally, the Census Bureau has teams currently focused on researching numerous ways for modernizing GQ enumeration. The RVDO will keep states updated on this research, and any other developments, changes, or opportunities for public input.

### **Supporting Documentation Provided by the Census Bureau**

Because states indicated they were satisfied with technical documentation, data import tools, and other materials provided with the redistricting data, the Census Bureau will continue to plan for similar materials in the 2030 RDP. The RVDO will also work with data dissemination teams at the Census Bureau to encourage releasing visualizations similar to what was released for the 2020 Census, researching the possibility of adding additional geography to those visualizations, and releasing them on the same day as the data are released.

### **PROCESS OF COLLECTING POST-2030 CENSUS CONGRESSIONAL AND STATE LEGISLATIVE DISTRICT BOUNDARIES (PHASE 4)**

The RVDO plans few changes to the Phase 4 procedures for the 2030 Census. However, the RVDO will provide trainings and webinars to states on submitting their new CD and SLD plans following the 2030 Census, to streamline the process for states and ensure standard consistent submissions that will be easier to process into the MAF/TIGER System. The RVDO will also provide unique block codes on the block equivalency verification files, per the states' request, to help streamline their reviews.

# Appendixes

## APPENDIX A.

PUBLIC LAW 94-171—DEC. 23, 1975

89 STAT. 1023

Public Law 94-171  
94th Congress

### An Act

To amend section 141 of title 13, United States Code, to provide for the transmittal to each of the several States of the tabulation of population of that State obtained in each decennial census and desired for the apportionment or districting of the legislative body or bodies of that State, in accordance with, and subject to the approval of the Secretary of Commerce, a plan and form suggested by that officer or public body having responsibility for legislative apportionment or districting of the State being tabulated, and for other purposes.

Dec. 23, 1975  
[H.R. 1753]

*Be it enacted by the Senate and House of Representatives of the United States of America in Congress assembled,* That section 141 of title 13, United States Code, is amended by adding at the end thereof the following new subsection:

Population,  
tabulation for  
State legislative  
apportionment.

“(c) The officers or public bodies having initial responsibility for the legislative apportionment or districting of each State may, not later than three years prior to the census date, submit to the Secretary a plan identifying the geographic areas for which specific tabulations of population are desired. Each such plan shall be developed in accordance with criteria established by the Secretary, which he shall furnish to such officers or public bodies not later than April 1 of the fourth year preceding the census date. Such criteria shall include requirements which assure that such plan shall be developed in a nonpartisan manner. Should the Secretary find that a plan submitted by such officers or public bodies does not meet the criteria established by him, he shall consult to the extent necessary with such officers or public bodies in order to achieve the alterations in such plan that he deems necessary to bring it into accord with such criteria. Any issues with respect to such plan remaining unresolved after such consultation shall be resolved by the Secretary, and in all cases he shall have final authority for determining the geographic format of such plan. Tabulations of population for the areas identified in any plan approved by the Secretary shall be completed by him as expeditiously as possible after the census date and reported to the Governor of the State involved and the officers or public bodies having responsibility for legislative apportionment or districting of such State, except that such tabulations of population of each State requesting a tabulation plan, and basic tabulations of population of each State, shall, in any event, be completed, reported and transmitted to each respective State within one year after the census date.”.

---

SEC. 2. (a) The heading for section 141 of title 13, United States Code, is amended by adding at the end thereof the following: “; tabulation for legislative apportionment”.

(b) The table of sections for chapter 5 of title 13, United States Code, is amended by striking out the item relating to section 141 and inserting in lieu thereof the following:

“141. Population, unemployment, and housing; tabulation for legislative apportionment.”.

Approved December 23, 1975.

---

LEGISLATIVE HISTORY:

HOUSE REPORT No. 94-456 (Comm. on Post Office and Civil Service).

SENATE REPORT No. 94-539 (Comm. on Post Office and Civil Service).

CONGRESSIONAL RECORD, Vol. 121 (1975):

Nov. 7, considered and passed House.

Dec. 15, considered and passed Senate.

---

**APPENDIX B.****OFFICIAL RECIPIENTS OF THE 2020 CENSUS P.L. 94-171 POPULATION COUNTS****ALABAMA**

The Honorable Kay Ivey  
Governor

The Honorable Will Ainsworth  
Lt. Governor/President of the Senate

The Honorable John Merrill  
Secretary of State, Chief State Elections Official

The Honorable Greg Reed  
Senate President Pro Tem

The Honorable Clay Scofield  
Senate Majority Leader

The Honorable Bobby Singleton  
Senate Minority Leader

The Honorable Jim McClendon  
Senate Chair Redistricting & Reapportionment

The Honorable Mac McCutcheon  
Speaker of the House

The Honorable Victor Gaston  
Speaker Pro Tem

The Honorable Nathaniel Ledbetter  
House Majority Leader

The Honorable Anthony Daniels  
House Minority Leader

Mr. David Brewer  
Chief of Staff

Ms. Jo Bonner  
Chief of Staff

Ms. Donna J. Overton  
Supervisor Reapportionment Office

Ms. Tracy Horgan  
Director Caliper Redistricting Services

**ALASKA**

The Honorable Mike Dunleavy  
Governor

The Honorable Kevin Meyer  
Lt. Governor, Chief State Elections Official

The Honorable Peter Micciche  
President of the Senate

The Honorable Shelley Hughes  
Senate Majority Leader

The Honorable Tom Begich  
Senate Minority Leader

The Honorable Louise Stutes  
Speaker of the House

The Honorable Chris Tuck  
House Majority Leader

The Honorable Cathy Tilton  
House Minority Leader

Mr. John Binkley  
Chair—Alaska Redistricting Board

Mr. Peter Torkelson  
Executive Director Alaska Redistricting Board

Mr. Eric Sandberg  
Research Analyst III

Ms. Amory Lelake  
Chief of Staff

Mr. Fred Hejazi  
CEO—CityGate GIS

**ARIZONA**

The Honorable Doug Ducey  
Governor

The Honorable Katie Hobbs  
Secretary of State, Chief State Elections Official

The Honorable Karen Fann  
President of the Senate

The Honorable Vincent Leach  
Senate President Pro Tem

The Honorable Rick Gray  
Senate Majority Leader

The Honorable Rebecca Rios  
Senate Minority Leader

The Honorable Russell Bowers  
Speaker of the House

The Honorable Travis Grantham  
Speaker Pro Tem

The Honorable Benjamin Toma  
House Majority Leader

---

The Honorable Reginald Bolding  
House Minority Leader

Ms. Erika Neuberg  
Chair—Independent Redistricting Commission

Ms. Bo Dul  
State Election Director

Mr. Michael E. Braun  
Executive Director

Mr. Andrew Pappas  
General Counsel

## **ARKANSAS**

The Honorable Asa Hutchinson  
Governor

The Honorable Tim Griffin  
Lt. Governor/President of the Senate

The Honorable Betty Dickey  
Coordinator AR Board of Apportionment

The Honorable John Thurston  
Secretary of State, Chief State Elections Official

The Honorable Jimmy Hickey  
Senate President Pro Tem

The Honorable Scott Flippo  
Senate Majority Leader

The Honorable Keith Ingram  
Senate Minority Leader

The Honorable Matthew Shepherd  
Speaker of the House

The Honorable Jon S. Eubanks  
Speaker Pro Tem

The Honorable Austin McCollum  
House Majority Leader

The Honorable Tippi McCullough  
House Minority Leader

Mr. Bill Gossage  
Deputy Chief of Staff

Mr. Marty Garrity  
Director—B.L.R.

Mr. Fred Hejazi  
CEO—CityGate GIS

## **CALIFORNIA**

The Honorable Gavin Newsom  
Governor

The Honorable Eleni Kounalakis  
Lt. Governor/President of the Senate

The Honorable Shirley Weber  
Secretary of State, Chief State Elections Official

The Honorable Toni G. Atkins  
Senate President Pro Tem

The Honorable Robert M. Hertzberg  
Senate Majority Leader

The Honorable Scott Wilk  
Senate Minority Leader

The Honorable Anthony Rendon  
Speaker of the Assembly

The Honorable Kevin Mullin  
Speaker Pro Tem

The Honorable Eloise Gomez Reyes  
House Majority Leader

The Honorable Marie Waldron  
House Minority Leader

Commissioner Trena Turner  
California Citizens Redistricting Commission

Commissioner Isra Ahmad  
California Citizens Redistricting Commission

Ms. Karin MacDonald  
Director—Statewide Database

Mr. Walter Schwarm  
Director—Dept. of Finance

## **COLORADO**

The Honorable Jared Polis  
Governor

The Honorable Jena Griswold  
Secretary of State, Chief State Elections Official

The Honorable Leroy M. Garcia Jr.  
President of the Senate

The Honorable Kerry Donovan  
Senate President Pro Tem

The Honorable Stephen Fenberg  
Senate Majority Leader

The Honorable Chris Holbert  
Senate Minority Leader

The Honorable Alec Garnett  
Speaker of the House

The Honorable Adrienne Benavidez  
Speaker Pro Tem

The Honorable Daneya Esgar  
House Majority Leader

The Honorable Hugh McKean  
House Minority Leader

---

Ms. Carly Hare  
Chair—Colorado Independent Congressional  
Redistricting Commission

Mr. Carlos Perez  
Chair—Colorado Independent Legislative  
Redistricting Commission

Ms. Jolie Brawner  
Vice Chair—Colorado Independent Congressional  
Redistricting Commission

Mr. Kevin Fletcher  
Vice Chair—Colorado Independent Legislative  
Redistricting Commission

Mr. Jeremiah B. Barry  
Senior Staff Attorney

Ms. Elizabeth Garner  
Director—State Demography Office,  
Governor’s Liaison

**CONNECTICUT**

The Honorable Ned Lamont  
Governor

The Honorable Susan Bysiewicz  
Lt. Governor/President of the Senate

The Honorable Denise Merrill  
Secretary of State, Chief State Election Official

The Honorable Martin Looney  
Senate President Pro Tem

The Honorable Bob Duff  
Senate Majority Leader

The Honorable Kevin Kelly  
Senate Minority Leader

The Honorable Matthew D. Ritter  
Speaker of the House

The Honorable Jason Rojas  
House Majority Leader

The Honorable Vincent Candelora  
House Minority Leader

Mr. Jim Tamburro  
Executive Director

Ms. Shannon Wegele  
Chief of Staff

Ms. Bree Berner  
Legal Research and Technology

Mr. Fred Hejazi  
CEO—CityGate GIS

**DELAWARE**

The Honorable John Carney  
Governor

The Honorable Bethany Hall-Long  
Lt. Governor/President of the Senate

The Honorable Jeffrey Bullock  
Secretary of State

The Honorable David Sokola  
Senate President Pro Tem

The Honorable Bryan Townsend  
Senate Majority Leader

The Honorable Gerald W. Hocker  
Senate Minority Leader

The Honorable Peter C. Schwartzkopf  
Speaker of the House

The Honorable Valerie Longhurst  
House Majority Leader

The Honorable Daniel B. Short  
House Minority Leader

Mr. Jason Clarke  
Chief Information Officer—DTI

Mr. Angel Burack  
Deputy Director—OIS

Mr. Mark J. Cutrona, Esq.  
Director—Division of Research

Ms. Kim Cloud  
Location Intelligence Team

Ms. Tracy Horgan  
Director Caliper Redistricting Services

**DISTRICT OF COLUMBIA**

The Honorable Muriel Bowser  
Mayor of the District

The Honorable Phil Mendelson  
Chairman of the Council

The Honorable Kimberly A. Bassett  
Secretary of the District

The Honorable Kenyan McDuffie  
Chairman Pro Tempore

The Honorable Robert C. White, Jr.  
Councilmember—At-Large

The Honorable Christina Henderson  
Councilmember—At-Large

The Honorable Trayon White, Sr.  
Councilmember—Ward Eight

---

The Honorable Janeese Lewis George  
Councilmember—Ward Four

The Honorable Brianne Nadeau  
Councilmember—Ward One

The Honorable Vincent Gray  
Councilmember—Ward Seven

The Honorable Charles Allen  
Councilmember—Ward Six

The Honorable Mary M. Cheh  
Councilmember—Ward Three

The Honorable Brooke Pinto  
Councilmember—Ward Two

The Honorable Elissa Silverman  
Councilmember At-Large

The Honorable Anita Bonds  
Councilmember At-Large

Dr. Joy Phillips  
Associate Director—State Data Center

## **FLORIDA**

The Honorable Ron DeSantis  
Governor

The Honorable Laurel Lee  
Secretary of State, Chief State Elections Official

The Honorable Wilton Simpson  
President of the Senate

The Honorable Debbie Mayfield  
Senate Majority Leader

The Honorable Lauren Book  
Senate Minority Leader

The Honorable Chris Sprowls  
Speaker of the House

The Honorable Bryan Avila  
Speaker Pro Tem

The Honorable Michael Grant  
House Majority Leader

The Honorable Evan Jenne  
House Co-Minority Leader

The Honorable Bobby DuBose  
House Co-Minority Leader

Mr. Jason Poreda  
Legislative Analyst

Mr. Jay Ferrin  
Staff Director

Ms. Leda Kelly  
Staff Director—House Redistricting Committee

## **GEORGIA**

The Honorable Brian Kemp  
Governor

The Honorable Geoff Duncan  
Lt. Governor/President of the Senate

The Honorable Butch Miller  
Senate President Pro Tem

The Honorable Mike Dugan  
Senate Majority Leader

The Honorable Gloria S. Butler  
Senate Minority Leader

The Honorable David Ralston  
Speaker of the House

The Honorable Jan Jones  
Speaker Pro Tem

The Honorable Jon G. Burns  
House Majority Leader

The Honorable James Beverly  
House Minority Leader

Ms. Elizabeth Fetzer  
Administrative Assistant

Ms. Gina H. Wright  
Executive Director Legislative & Congressional  
Reapportionment Office

Ms. Tracy Horgan  
Director Caliper Redistricting Services

## **HAWAII**

The Honorable David Y. Ige  
Governor of Hawaii

The Honorable Josh Green  
Lt. Governor

The Honorable Ronald D. Kouchi  
President of the Senate

The Honorable Michelle Kidani  
Senate Vice President

The Honorable Dru Mamo Kanuha  
Senate Majority Leader

The Honorable Kurt Fevella  
Senate Minority Leader

The Honorable Scott Saiki  
Speaker of the House

The Honorable Della Au Belatti  
House Majority Leader

The Honorable Val Okimoto  
House Minority Leader

---

Dr. Mark M. Mugiishi  
Chair—State Redistricting Panel

Mr. Scott Nago  
Chief Election Officer

**IDAHO**

The Honorable Brad Little  
Governor

The Honorable Janice McGeachin  
Lt. Governor/President of the Senate

The Honorable Lawrence Denney  
Secretary of State, Chief State Elections Official

The Honorable Chuck Winder  
Senate President Pro Tem

The Honorable Kelly Arthur Anthon  
Senate Majority Leader

The Honorable Michelle Stennett  
Senate Minority Leader

The Honorable Scott Bedke  
Speaker of the House

The Honorable Mike Moyle  
House Majority Leader

The Honorable Ilana Rubel  
House Minority Leader

Mr. Keith Bybee  
Budget and Policy Analyst

Ms. Elizabeth Bowen  
Legislative Research Analyst

**ILLINOIS**

The Honorable Jay Robert “J.B.” Pritzker  
Governor

The Honorable Jesse White  
Secretary of State

The Honorable Don Harmon  
President of the Senate

The Honorable Kimberley A. Lightford  
Senate Majority Leader

The Honorable Dan McConchie  
Senate Minority Leader

The Honorable Emanuel Chris Welch  
Speaker of the House

The Honorable Gregory Harris  
House Majority Leader

The Honorable Jim Durkin  
House Republican Leader

Mr. Steve Sandvoss  
Executive Director

Mr. Jake Butcher  
Chief of Staff

Mr. Kimball Brace  
President—EDS

Ms. Lissa Richno  
Administrative Assistant III

Mr. Ryan Taylor  
GIS Analyst

Mr. Fred Hejazi  
CEO—CityGate GIS

**INDIANA**

The Honorable Eric Holcomb  
Governor

The Honorable Suzanne Crouch  
Lt. Governor/President of the Senate

The Honorable Holli Sullivan  
Secretary of State, Chief State Elections Official

The Honorable Rodric Bray  
Senate President Pro Tem

The Honorable Mark Messmer  
Senate Majority Leader

The Honorable Greg Taylor  
Senate Minority Leader

The Honorable Todd Huston  
Speaker of the House

The Honorable Mike Karickhoff  
Speaker Pro Tem

The Honorable Matt Lehman  
House Majority Floor Leader

The Honorable Phil GiaQuinta  
House Minority Leader

Mr. Mark Stratton  
Co-Manager Office of Census Data

Mr. Robert Rudolph, Esq.  
Staff Attorney

Ms. Heather Kelly  
Co-Manager Office of Census Data

Mr. Fred Hejazi  
CEO—CityGate GIS

**IOWA**

The Honorable Kim Reynolds  
Governor

---

The Honorable Paul Pate  
Secretary of State, Chief State Elections Official

The Honorable Jake Chapman  
President of the Senate

The Honorable Brad Zaun  
Senate President Pro Tem

The Honorable Jack Whitver  
Senate Majority Leader

The Honorable Zach Wahls  
Senate Minority Leader

The Honorable Pat Grassley  
Speaker of the House

The Honorable John H. Wills  
Speaker Pro Tem

The Honorable Matt W. Windschitl  
House Majority Leader

The Honorable Jennifer Konfrst  
House Minority Leader

Mr. Gary D. Rudicil  
SR. Computer Systems Analyst

Ms. Tracy Horgan  
Director Caliper Redistricting Services

#### **KANSAS**

The Honorable Laura Kelly  
Governor

The Honorable Scott Schwab  
Secretary of State, Governor's Liaison,  
Chief State Elections Official

The Honorable Ty Masterson  
President of the Senate

The Honorable Larry Alley  
Senate Majority Leader

The Honorable Dinah Sykes  
Senate Minority Leader

The Honorable Ron Ryckman  
Speaker of the House

The Honorable Blaine Finch  
Speaker Pro Tem

The Honorable Daniel Hawkins  
House Majority Leader

The Honorable Tom Sawyer  
House Minority Leader

Mr. J. G. Scott  
Director—KS Legislative Research Dept.

Ms. Amy Deckard  
Assistant Director Fiscal Affairs

Ms. Joanna Dolan  
Principal Analyst

Ms. Tracy Horgan  
Director Caliper Redistricting Services

#### **KENTUCKY**

The Honorable Andy Beshear  
Governor

The Honorable Michael Adams  
Secretary of State, Chief State Elections Official

The Honorable Robert Stivers  
President of the Senate

The Honorable David P. Givens  
Senate President Pro Tem

The Honorable Damon Thayer  
Senate Majority Floor Leader

The Honorable Morgan McGarvey  
Senate Minority Floor Leader

The Honorable David Osborne  
Speaker

The Honorable David Meade  
Speaker Pro Tem

The Honorable Steven Rudy  
House Majority Floor Leader

The Honorable Joni Jenkins  
House Minority Floor Leader

Mr. Greg Woosley  
Official RDP Liaison

#### **LOUISIANA**

The Honorable John Bel Edwards  
Governor

The Honorable R. Kyle Ardoin  
Secretary of State, Chief State Elections Official

The Honorable Patrick Page Cortez  
President of the Senate

The Honorable Beth Mizell  
Senate President Pro Tem

The Honorable Sharon Hewitt  
Chair—Republican Senate Caucus

The Honorable Gerald Boudreaux  
Chair—Democratic Senate Caucus

The Honorable Clay Schexnayder  
Speaker of the House

---

The Honorable Tanner Magee  
Speaker Pro Tem

The Honorable Blake Miguez  
Chair—Republican Legislative Caucus

The Honorable Sam L. Jenkins, Jr.  
Chair—House Democratic Caucus

The Honorable Edward “Ted” James II  
Chair—Legislative Black Caucus

Bill Blair Ph.D.  
Dir. Demographic Services

Ms. Tracy Horgan  
Director Caliper Redistricting Services

## **MAINE**

The Honorable Janet Mills  
Governor

The Honorable Shenna Bellows  
Secretary of State, Chief State Elections Official

The Honorable Troy D. Jackson  
President of the Senate

The Honorable Eloise Vitelli  
Senate Majority Leader

The Honorable Jeff Timberlake  
Senate Minority Leader

The Honorable Ryan Fecteau  
Speaker of the House

The Honorable Michelle Dunphy  
House Majority Floor Leader

The Honorable Kathleen Dillingham  
House Minority Floor Leader

Mr. William Thompson  
Chief of Staff

Ms. Amanda Rector  
State Economist, Governor’s Liaison,  
State Data Center Contact

Mr. Sean Smith  
Director

## **MARYLAND**

The Honorable Larry Hogan  
Governor

The Honorable John Wobensmith  
Secretary of State

The Honorable Bill Ferguson  
President of the Senate

The Honorable Melony Griffith  
Senate President Pro Tem

The Honorable Nancy King  
Senate Majority Leader

The Honorable Bryan Simonaire  
Senate Minority Leader

The Honorable Adrienne A. Jones  
Speaker of the House

The Honorable Sheree Sample-Hughes  
Speaker Pro Tem

The Honorable Eric Luedtke  
House Majority Leader

The Honorable Jason Buckel  
House Minority Leader

Secretary Robert S. McCord  
Secretary of Planning

Mr. Alfred P. Sundara, AICP  
Manager—Projections and State Data Center

## **MASSACHUSETTS**

The Honorable Charlie Baker  
Governor

The Honorable William Francis Galvin  
Secretary of the Commonwealth,  
Chief State Election Official

The Honorable Karen E. Spilka  
President of the Senate

The Honorable William N. Brownsberger  
Senate President Pro Tem

The Honorable Cynthia Stone Creem  
Senate Majority Leader

The Honorable Bruce E. Tarr  
Senate Minority Leader

The Honorable Ronald Mariano  
Speaker of the House

The Honorable Kate Hogan  
Speaker Pro Tem

The Honorable Claire Cronin  
House Majority Leader

The Honorable Bradley H. Jones, Jr.  
House Minority Leader

Mr. Hiram Shah  
Legal Counsel

Mr. John Barr  
Program Manager—Census Division

---

Ms. Carrie Bernstein  
State Data Center Manager

## **MICHIGAN**

The Honorable Gretchen Whitmer  
Governor

The Honorable Garlin Gilchrist II  
Lt. Governor/President of the Senate

The Honorable Jocelyn Benson  
Secretary of State, Chief State Elections Official

The Honorable Aric Nesbitt  
Senate President Pro Tem

The Honorable Mike Shirkey  
Senate Majority Leader

The Honorable Jim Ananich  
Senate Minority Leader

The Honorable Jason Wentworth  
Speaker

The Honorable Pamela Hornberger  
Speaker Pro Tem

The Honorable Ben Frederick  
House Majority Leader

The Honorable Donna Lasinski  
House Minority Leader

Ms. Suann Hammersmith  
Executive Director MICRC

Mr. Robert Surber  
Service Delivery Director

## **MINNESOTA**

The Honorable Tim Walz  
Governor

The Honorable Steve Simon  
Secretary of State, Chief State Elections Official

The Honorable Jeremy R. Miller  
President of the Senate

The Honorable David Tomassoni  
President Pro Tem

The Honorable Paul E. Gazelka  
Senate Majority Leader

The Honorable Susan Kent  
Senate Minority Leader

The Honorable Melissa Hortman  
Speaker of the House

The Honorable Ryan Winkler  
House Majority Leader

The Honorable Kurt Daudt  
House Minority Leader

Dr. Susan Brower  
MN State Demographer

Mr. Lee Meilleur  
Manager—Geographic Information Services

## **MISSISSIPPI**

The Honorable Tate Reeves  
Governor

The Honorable Delbert Hosemann  
Lt. Governor/President of the Senate

The Honorable Michael Watson  
Secretary of State, Chief State Elections Official

The Honorable Dean Kirby  
Senate President Pro Tem

The Honorable Jeff Tate  
Chair—Senate Elections Committee

The Honorable Philip Gunn  
Speaker of the House

The Honorable Jason White  
Speaker Pro Tem

The Honorable Charles Jim Beckett  
Chair—Apportionment & Elections Committee

Ms. Emily W. Kruger  
Deputy Legal Counsel

Mr. Nathan Upchurch  
Chief of Staff

Mr. Brad White  
Chief of Staff

Mr. James F. Ted Booth  
State Liaison

Ms. Tracy Horgan  
Director Caliper Redistricting Services

## **MISSOURI**

The Honorable Michael L. Parson  
Governor

The Honorable Mike Kehoe  
Lt. Governor/President of the Senate

The Honorable John Ashcroft  
Secretary of State, Chief State Elections Official

The Honorable Dave Schatz  
Senate President Pro Tem

The Honorable Caleb Rowden  
Senate Majority Floor Leader

---

The Honorable John Rizzo  
Senate Minority Floor Leader

The Honorable Rob Vescovo  
Speaker of the House

The Honorable John Wiemann  
Speaker Pro Tem

The Honorable Dean Plocher  
House Majority Floor Leader

The Honorable Crystal Quade  
House Minority Floor Leader

The Honorable Trish Vincent  
Deputy Secretary of State/Chief of Staff

Mr. Matt Hesser  
State Demographer, Governor's Liaison

Ms. Chrissy Peters  
Senior Election Director

Ms. Tracy Horgan  
Director Caliper Redistricting Services

#### **MONTANA**

The Honorable Greg Gianforte  
Governor

The Honorable Christi Jacobsen  
Secretary of State, Chief State Elections Official

The Honorable Mark Blasdel  
President of the Senate

The Honorable Jason Ellsworth  
Senate President Pro Tem

The Honorable Cary Smith  
Senate Majority Leader

The Honorable Jill Cohenour  
Senate Minority Leader

The Honorable Wylie Galt  
Speaker of the House

The Honorable Casey Knudsen  
Speaker Pro Tem

The Honorable Sue Vinton  
House Majority Floor Leader

The Honorable Kim Abbott  
House Minority Leader

Ms. Maylinn Smith  
Presiding Officer—Districting & Apportionment  
Commission

Ms. Mary Craigle  
Bureau Chief, Governor's Liaison,  
State Data Center Contact

#### **NEBRASKA**

The Honorable Pete Ricketts  
Governor

The Honorable Robert Evnen  
Secretary of State, Chief State Elections Official

The Honorable Mike Hilgers  
Speaker of the Legislature

The Honorable Dan Hughes  
Chairman—Executive Board

Mr. Benjamin Thompson  
Director of Research

Ms. Jeni Bohlmeier  
Legislative Aide

Ms. Tracy Horgan  
Director Caliper Redistricting Services

#### **NEVADA**

The Honorable Steve Sisolak  
Governor

The Honorable Kate Marshall  
Lieutenant Governor/President of the Senate

The Honorable Barbara Cegavske  
Secretary of State, Chief State Elections Official

The Honorable Moises "Mo" Denis  
Senate President Pro Tem

The Honorable Nicole Cannizzaro  
Senate Majority Leader

The Honorable James A. Settelmeier  
Senate Minority Leader

The Honorable Jason Frierson  
Speaker of the Assembly

The Honorable Steve Yeager  
Speaker Pro Tem

The Honorable Teresa Benitez-Thompson  
Assembly Majority Floor Leader

The Honorable Robin Titus  
Assembly Minority Floor Leader

Mr. Michael J. Stewart  
Director—Research Division—LCB

Mr. Fred Hejazi  
CEO—CityGate GIS

#### **NEW HAMPSHIRE**

The Honorable Chris Sununu  
Governor

The Honorable William Gardner  
Secretary of State, Chief State Elections Official

---

The Honorable Chuck Morse  
President of the Senate

The Honorable Jeb Bradley  
Senate Majority Leader

The Honorable Donna Soucy  
Senate Minority Leader

The Honorable Sherman Packard  
Speaker of the House

The Honorable Jason Osborne  
House Majority Leader

The Honorable Robert Renny Cushing  
House Minority Leader

Mr. Kenneth Gallagher  
SDC Principal Planner—GIS & GRANIT, Governor's  
Liaison

### **NEW JERSEY**

The Honorable Phil Murphy  
Governor

The Honorable Sheila Oliver  
Lt. Governor, Chief State Elections Official

The Honorable Stephen M. Sweeney  
President of the Senate

The Honorable M. Teresa Ruiz  
Senate President Pro Tem

The Honorable Loretta Weinberg  
Senate Majority Leader

The Honorable Thomas H. Kean, Jr.  
Senate Minority Leader

The Honorable Craig J. Coughlin  
Speaker of the House

The Honorable Gordon M. Johnson  
Speaker Pro Tem

The Honorable Louis D. Greenwald  
House Majority Leader

The Honorable Jon M. Bramnick  
House Republican Leader

Mr. John E. Wallace Jr.  
Chair—NJ Redistricting Commission

Mr. Kevin Drennan  
Executive Director

Mr. Leonard Preston  
Director of Labor Mkt & Demo Research, Governor's  
Liaison, State Data Center

### **NEW MEXICO**

The Honorable Michelle Lujan Grisham  
Governor

The Honorable Howie Morales  
Lt. Governor/President of the Senate

The Honorable Maggie Toulouse Oliver  
Secretary of State, Chief State Elections Official

The Honorable Mimi Stewart  
Senate President Pro Tem

The Honorable Peter Wirth  
Senate Majority Floor Leader

The Honorable Gregory Baca  
Senate Minority Floor Leader

The Honorable Brian Egolf  
Speaker of the House

The Honorable Javier Martinez  
House Majority Floor Leader

The Honorable James G. Townsend  
House Minority Floor Leader

Mr. Matt Garcia  
Chief of Staff

Mr. Raul Burciaga  
Director—Legislative Council Service

Ms. Reena Szczepanski  
Chief of Staff

### **NEW YORK**

The Honorable Kathy Hochul  
Governor

The Honorable Rossana Rosado  
Secretary of State

The Honorable Andrea Stewart-Cousins  
President Pro Tem and Senate Majority Leader

The Honorable Robert G. Ort  
Senate Minority Leader

The Honorable Carl E. Heastie  
Speaker of the Assembly

The Honorable Crystal D. Peoples-Stokes  
Assembly Majority Leader

The Honorable William Barclay  
Assembly Minority Leader

Mr. Adrian Williams  
Co-Executive Director LATFOR

Mr. Phillip Chonigman  
Co-Executive Director LATFOR

---

Mr. Douglas Breakell  
Co-Executive Director NYS Redistricting Commission

Ms. Karen Blatt  
Co-Executive Director NYS Redistricting Commission

Mr. Bruce B. Ruiz  
GIS Manager—LATFOR

Ms. Kristy A. McCann  
Special Assistant

**NORTH CAROLINA**

The Honorable Roy Cooper  
Governor

The Honorable Mark Robinson  
Lt. Governor/President of the Senate

The Honorable Elaine Marshall  
Secretary of State

The Honorable Phil Berger  
Senate President Pro Tem

The Honorable Kathy Harrington  
Senate Majority Leader

The Honorable Ben Clark  
Secretary Senate Democratic Caucus

The Honorable Dan Blue  
Senate Minority Leader

The Honorable Tim Moore  
Speaker of the House

The Honorable Sarah Stevens  
House Speaker Pro Tem

The Honorable John R. Bell IV  
House Majority Leader

The Honorable Robert Reives  
House Minority Leader

Mr. Paul Coble  
Legislative Services Officer

Mr. Bob Coats  
Executive Staff, Governor's Liaison, State Data Center  
Contact

Ms. Tracy Horgan  
Director Caliper Redistricting Services

**NORTH DAKOTA**

The Honorable Doug Burgum  
Governor

The Honorable Brent Sanford  
Lt. Governor/President of the Senate

The Honorable Alvin "Al" Jaeger  
Secretary of State, Chief State Elections Official

The Honorable Randy Burckhard  
Senate President Pro Tem

The Honorable Rich Wardner  
Senate Majority Leader

The Honorable Joan Heckaman  
Senate Minority Leader

The Honorable Kim Koppelman  
Speaker of the House

The Honorable Chet Pollert  
House Majority Leader

The Honorable Josh Boschee  
House Minority Leader

Mr. John Bjornson  
Director—Legislative Council

Mr. Kevin C. Iverson  
State Data Center

Ms. Tracy Horgan  
Director Caliper Redistricting Services

**OHIO**

The Honorable Mike DeWine  
Governor

The Honorable Frank LaRose  
Secretary of State, Chief State Elections Official

The Honorable Matt Huffman  
President of the Senate

The Honorable Jay Hottinger  
Senate President Pro Tem

The Honorable Kirk Schuring  
Senate Majority Floor Leader

The Honorable Kenny Yuko  
Senate Minority Leader

The Honorable Robert R. Cupp  
Speaker of the House

The Honorable Emilia Strong Sykes  
House Minority Leader

Dr. G. Jason Jolley  
Assistant Professor & MPA Director

**OKLAHOMA**

The Honorable Kevin Stitt  
Governor

The Honorable Matt Pinnell  
Lt. Governor/President of the Senate

---

The Honorable Brian Bingman  
Secretary of State

The Honorable Greg Treat  
Senate President Pro Tem

The Honorable Kim David  
Senate Majority Floor Leader

The Honorable Kay Floyd  
Senate Minority Floor Leader

The Honorable Charles McCall  
Speaker of the House

The Honorable Terry O'Donnell  
Speaker Pro Tempore

The Honorable Jon Echols  
House Majority Leader

The Honorable Emily Virgin  
House Minority Leader

Ms. Ashley Crall  
Dir. of Scheduling & Constituent Srvcs.

Ms. Tricia Hines  
GIS Coordinator

Mr. Keith Beall  
Redistricting Director

Ms. Tracy Horgan  
Director Caliper Redistricting Services

## **OREGON**

The Honorable Kate Brown  
Governor

The Honorable Shemia Fagan  
Secretary of State, Chief State Elections Official

The Honorable Peter Courtney  
President of the Senate

The Honorable James Manning, Jr.  
Senate President Pro Tem

The Honorable Robert Wagner  
Senate Majority Leader

The Honorable Fred Girod  
Senate Minority Leader

The Honorable Tina Kotek  
Speaker of the House

The Honorable Barbara Smith Warner  
House Majority Leader

The Honorable Christine Drazan  
House Minority Leader

Ms. Misty Mason Freeman  
Interim Director

## **PENNSYLVANIA**

The Honorable Tom Wolf  
Governor

The Honorable John Fetterman  
Lt. Governor/President of the Senate

The Honorable Veronica Degraffenreid  
Acting Secretary of the Commonwealth,  
Chief State Elections Official

The Honorable Jake Corman  
Senate President Pro Tem

The Honorable Kim Ward  
Senate Majority Leader

The Honorable Jay Costa  
Senate Minority Floor Leader

The Honorable Bryan Cutler  
Speaker of the House

The Honorable Kerry A. Benninghoff  
House Majority Leader

The Honorable Joanna McClinton  
House Minority Leader

Mr. Brent McClintock  
Executive Director—Legislative Data Processing  
Center

## **PUERTO RICO**

The Honorable Maite D. Oronoz Rodríguez  
Chief Justice of the Supreme Court

The Honorable Pedro Pierluisi  
Governor

The Honorable Larry Seilhamer Rodríguez  
Secretary of State

The Honorable José Luis Dalmau-Santiago  
President of the Senate (PPD)

The Honorable Marially González Huertas  
Senate Vice President (PPD)

The Honorable Javier Aponte Dalmau  
Senate Majority Leader (PPD)

The Honorable Ana Irma Rivera Lassén  
Senate Minority Leader (MVC)

The Honorable Joanne Rodríguez Veve  
Senate Minority Leader (PD)

The Honorable Maria de Lourdes Santiago Negrón  
Senate Minority Leader (PIP)

The Honorable Thomas Rivera Schatz  
Senate Minority Leader (PNP)

The Honorable Rafael (Tatito) Hernández Montañez  
Speaker (PPD)

---

The Honorable José (Conny) Varela Fernández  
Vice Speaker (PPD)

The Honorable Angel Matos García  
House Majority Leader (PPD)

The Honorable Mariana Nogales Molinelli  
House Minority Leader (MVC)

The Honorable Lisie Janet Burgos Muñiz  
House Minority Leader (PD)

The Honorable Denis Márquez Lebrón  
House Minority Leader (PIP)

The Honorable Carlos (Johnny) Mendez Nunez  
House Minority Leader (PNP)

The Honorable Francisco Rosado Colomer  
President of the CEE

Mr. Manuel A.G. Hidalgo  
Chairperson—Junta de Planificación

Mr. Alejandro Díaz Marrero  
Director of Economic and Social Planning

#### **RHODE ISLAND**

The Honorable Daniel J. McKee  
Governor

The Honorable Nellie Gorbea  
Secretary of State, Chief State Elections Official

The Honorable Dominick J Ruggiero  
President of the Senate

The Honorable Michael McCaffrey  
Senate Majority Leader

The Honorable Dennis L. Algieri  
Senate Minority Leader

The Honorable K. Joseph Shekarchi  
Speaker of the House

The Honorable Christopher Blazejewski  
House Majority Leader

The Honorable Blake A. Filippi  
House Minority Leader

Mr. Jake Bissaillon  
Chief of Staff

Mr. Raymond Simone  
Chief of Staff

Mr. Kimball Brace  
President—EDS

Mr. Ryan Taylor  
GIS Analyst

#### **SOUTH CAROLINA**

The Honorable Henry McMaster  
Governor

The Honorable Mark Hammond  
Secretary of State

The Honorable Harvey S. Peeler, Jr.  
Senate President

The Honorable A. Shane Massey  
Senate Majority Leader

The Honorable Brad Hutto  
Senate Minority Leader

The Honorable James H. “Jay” Lucas  
Speaker of the House

The Honorable Thomas E. “Tommy” Pope  
Speaker Pro Tem

The Honorable J. Gary Simrill  
House Majority Leader

The Honorable J. Todd Rutherford  
House Minority Leader

Mr. Will Roberts  
State Political Cartographer

Ms. Tracy Horgan  
Director Caliper Redistricting Services

#### **SOUTH DAKOTA**

The Honorable Kristi Noem  
Governor

The Honorable Larry Rhoden  
Lt. Governor/President of the Senate

The Honorable Steve Barnett  
Secretary of State, Chief State Elections Official

The Honorable Lee Schoenbeck  
Senate President Pro Tem

The Honorable Gary Cammack  
Senate Majority Leader

The Honorable Troy Heinert  
Senate Minority Leader

The Honorable Spencer Gosch  
Speaker of the House

The Honorable Kent Peterson  
House Majority Leader

The Honorable Jamie Smith  
House Minority Leader

The Honorable Ryan Cwach  
Representative

---

Dr. Mary Emery  
Department Head, Department of Sociology and  
Rural Studies

Mr. Reed Holwegner  
Director

Dr. Weiwei Zhang  
Director, State Data Center Contact

## **TENNESSEE**

The Honorable Bill Lee  
Governor

The Honorable Randy McNally  
Lt. Governor/Speaker of the Senate

The Honorable Tre Hargett  
Secretary of State

The Honorable Ferrell Haile  
Senate Speaker Pro Tem

The Honorable Jack Johnson  
Senate Majority Leader

The Honorable Jeff Yarbro  
Senate Minority Leader

The Honorable Cameron Sexton  
Speaker of the House

The Honorable William Lamberth  
House Majority Leader

The Honorable Karen D. Camper  
House Minority Leader

Mr. Bryan Kinsey  
Director—Division of Property Assessments

Mr. Jason Huff  
Senior Policy Advisor

Mr. Luke Gustafson  
Senior Policy Advisor

Ms. Anastasia Campbell  
Director—House Legal Services

Ms. Karen Garrett  
Director—Senate Legal Services

Ms. Lauren Agee  
Senior Policy Advisor

Ms. Tracy Horgan  
Director Caliper Redistricting Services

## **TEXAS**

The Honorable Greg Abbott  
Governor

The Honorable Dan Patrick  
Lt. Governor/President of the Senate

The Honorable Jose Esparza  
Secretary of State, Chief State Elections Official

The Honorable Donna Campbell  
Senate President Pro Tem

The Honorable Brandon Creighton  
Chair—Senate Republican Caucus

The Honorable Carol Alvarado  
Chair—Senate Democratic Caucus

The Honorable Dade Phelan  
Speaker of the House

The Honorable Joe Moody  
Speaker Pro Tem

The Honorable Phil King  
Chair—House Redistricting Committee

The Honorable Jim Murphy  
Chair—House Republican Caucus

The Honorable Chris Turner  
Chair—House Democratic Caucus

The Honorable Toni Rose  
Vice Chair—House Redistricting Committee

Mr. Jared May  
Manager—Mapping and Redistricting Section

Ms. Colleen Garcia  
General Counsel—House Redistricting Cmmtte.

Dr. Lloyd Potter  
State Demographer, State Data Center Contact

## **UTAH**

The Honorable Spencer Cox  
Governor

The Honorable Deidre Henderson  
Lt. Governor, Chief State Elections Official

The Honorable Stuart Adams  
President of the Senate

The Honorable Evan Vickers  
Senate Majority Leader

The Honorable Karen Mayne  
Senate Minority Leader

The Honorable Brad Wilson  
Speaker of the House

The Honorable Francis D. Gibson  
House Majority Leader

The Honorable Brian S. King  
House Minority Leader

Mr. Rex L. Facer II  
Utah Redistricting Chair

---

Mr. Gordon Haight II  
Exec. Dir.—Utah Independent Redistricting  
Commission

Mr. Jerry D. Howe  
Managing Policy Analyst

### **VERMONT**

The Honorable Phil Scott  
Governor

The Honorable Molly Gray  
Lt. Governor/President of the Senate

The Honorable Jim Condos  
Secretary of State, Chief State Elections Official

The Honorable Becca Balint  
Senate President Pro Tem

The Honorable Alison Clarkson  
Senate Majority Leader

The Honorable Randy Brock  
Senate Minority Leader

The Honorable Jill Krowinski  
Speaker of the House

The Honorable Emily Long  
House Majority Leader

The Honorable Patricia McCoy  
House Minority Leader

Mr. Michael Jay Chernick  
Legislative Counsel

Ms. Amerin Aborjaly  
Legislative Counsel

### **VIRGINIA**

The Honorable Ralph Northam  
Governor

The Honorable Justin V. Fairfax  
Lt. Governor/President of the Senate

The Honorable Kelly Thomasson  
Secretary of the Commonwealth

The Honorable L. Louise Lucas  
Senate President Pro Tem

The Honorable Richard L. Saslaw  
Senate Majority Leader

The Honorable Thomas K. Norment, Jr.  
Senate Minority Leader

The Honorable Eileen Filler-Corn  
Speaker of the House

The Honorable Charniele L. Herring  
House Majority Leader

The Honorable C. Todd Gilbert  
House Minority Leader

Ms. Greta J. Harris  
Co-Chair Virginia Redistricting Commission

Ms. Mackenzie K. Babichenko  
Co-Chair Virginia Redistricting Commission

Mr. Amigo R. Wade  
Acting Director

Ms. Margaret E. Lamb  
Counsel—Privileges and Elections Committees

Mr. Fred Hejazi  
CEO—CityGate GIS

### **WASHINGTON**

The Honorable Jay Inslee  
Governor

The Honorable Denny Heck  
Lt. Governor/President of the Senate

The Honorable Kim Wyman  
Secretary of State, Chief State Elections Official

The Honorable Karen Keiser  
Senate President Pro Tem

The Honorable Andy Billig  
Senate Majority Leader

The Honorable John Braun  
Senate Minority Leader

The Honorable Laurie Jinkins  
Speaker of the House

The Honorable Pat Sullivan  
House Majority Leader

The Honorable J. T. Wilcox  
House Minority Leader

Ms. Sarah Augustine  
Chair—WA State Redistricting Commission

Ms. Lisa C. McLean  
Executive Director

Mr. Nick Pharris  
Elections Information Specialist

Mr. Fred Hejazi  
CEO—CityGate GIS

### **WEST VIRGINIA**

The Honorable James Justice  
Governor

The Honorable Mac Warner  
Secretary of State, Chief State Elections Official

---

The Honorable Craig Blair  
Senate President

The Honorable Donna J. Boley  
Senate President Pro Tem

The Honorable Tom Takubo  
Senate Majority Leader

The Honorable Stephen Baldwin  
Senate Minority Leader

The Honorable Roger Hanshaw  
Speaker of the House

The Honorable Gary Howell  
Speaker Pro Tem

The Honorable Amy Summers  
House Majority Leader

The Honorable Douglas Skaff, Jr.  
House Minority Leader

Mr. Jeff Billings  
Assistant to the Speaker

Mr. Jake Nichols  
Senate Parliamentarian

Ms. Tracy Horgan  
Director Caliper Redistricting Services

#### **WISCONSIN**

The Honorable Tony Evers  
Governor

The Honorable Douglas La Follette  
Secretary of State

The Honorable Chris Kapenga  
President of the Senate

The Honorable Pat Testin  
Senate President Pro Tem

The Honorable Devin LeMahieu  
Senate Majority Leader

The Honorable Janet Bewley  
Senate Minority Leader

The Honorable Robin Vos  
Speaker of the Assembly

The Honorable Jim Steineke  
Assembly Majority Leader

The Honorable Gordon M. Hintz  
Assembly Minority Leader

Mr. Nathan Schwanz  
Budget and Policy Advisor

Mr. Jeff Ylvisaker  
Director—LTSB

#### **WYOMING**

The Honorable Mark Gordon  
Governor

The Honorable Edward Buchanan  
Secretary of State, Chief State Elections Official

The Honorable Dan Dockstader  
Senate President Pro Tem

The Honorable Ogden Driskill  
Senate Majority Floor Leader

The Honorable Christopher Rothfuss  
Senate Minority Floor Leader

The Honorable Eric Barlow  
Speaker of the House

The Honorable Mike Greear  
House Speaker Pro Tem

The Honorable Albert Sommers  
House Majority Floor Leader

The Honorable Cathy Connolly  
House Minority Floor Leader

Dr. Wenlin Liu  
Chief Economist, Governor's Liaison

Mr. Michael Swanck  
LSO Senior Fiscal Analyst

Mr. Matt Obrecht  
LSO Staff Attorney

Ms. Tracy Horgan  
Director Caliper Redistricting Services

**APPENDIX C.**

**REDISTRICTING STATISTICS**

Appendix Table C-1.

**2020 National Conference of State Legislatures Congressional and State Legislative Redistricting Deviation Table—Con.**

State	2020 congressional plan		Absolute range	2020 state house plan		2020 state senate plan	
	Ideal population	Overall range (percent)		Ideal population	Overall range (percent)	Ideal population	Overall range (percent)
Alabama	717,754	Z	1	47,850	9.95	143,551	9.97
Alaska <sup>1</sup>	X	X	X	18,335	7.48	36,670	4.53
Arizona	794,611	Z	2	238,383	8.89	238,383	8.89
Arkansas	752,881	Z	710	30,115	6.85	86,044	5.49
California <sup>2</sup>	760,066	Z	2	494,043	9.88	988,086	9.87
Colorado <sup>2</sup>	721,714	Z	1	88,826	4.93	164,963	4.99
Connecticut <sup>2</sup>	721,189	Z	1	23,865	8.41	100,099	9.99
Delaware <sup>1, 2</sup>	X	X	X	24,137	9.79	47,124	9.28
Florida	769,221	Z	1	179,485	4.75	538,455	1.92
Georgia	765,136	Z	2	59,511	2.74	191,284	2.01
Hawaii <sup>3</sup>	727,636	0.34	2,481	26,432	14.69	53,922	43.03
Idaho	919,553	Z	Z	52,546	5.84	52,546	5.84
Illinois	753,677	Z	1	108,581	0.48	217,161	0.37
Indiana	753,948	Z	2	67,855	1.90	135,711	3.92
Iowa	797,592	0.01	94	31,904	1.75	63,807	1.56
Kansas	734,470	Z	Z	23,503	7.53	73,447	7.35
Kentucky	750,973	Z	1	45,058	9.71	118,575	9.94
Louisiana	776,293	0.01	65	44,360	9.80	119,430	9.87
Maine	681,180	Z	1	9,022	9.83	38,925	9.45
Maryland <sup>2, 4</sup>	771,925	Z	1	43,797	7.93	131,392	7.89
Massachusetts	781,102	Z	2	43,937	9.82	175,748	9.97
Michigan	775,179	0.14	1,122	91,612	4.96	265,193	4.78
Minnesota	713,312	Z	1	42,586	1.96	85,172	1.89
Mississippi	740,320	Z	2	24,273	9.91	56,948	9.94
Missouri	769,364	Z	1	37,760	5.98	181,027	5.89
Montana <sup>2</sup>	542,113	Z	1	10,827	7.17	21,654	6.98
Nebraska	653,835	Z	25	X	X	40,031	9.01
Nevada <sup>2</sup>	776,154	Z	1	73,919	4.69	147,839	3.95
New Hampshire <sup>5</sup>	688,765	Z	1	3,444	9.90	57,397	7.98
New Jersey <sup>2</sup>	773,585	Z	2	232,075	6.35	232,075	6.35
New Mexico	705,841	Z	14	30,250	9.84	50,417	9.59
New York <sup>2</sup>	776,971	Z	1	134,626	9.97	320,537	3.85
North Carolina	745,671	Z	2	86,995	9.85	208,788	9.95
North Dakota <sup>1, 6</sup>	X	X	X	8,288	9.87	16,576	9.87
Ohio	786,630	Z	1	119,186	9.97	357,559	9.62
Oklahoma	791,871	Z	1	39,202	4.08	82,487	4.87
Oregon	706,209	Z	1	70,621	1.96	141,242	1.84
Pennsylvania <sup>2</sup>	764,865	Z	2	64,053	8.65	260,054	8.11
Rhode Island <sup>2</sup>	548,690	Z	1	14,632	9.77	28,878	9.82
South Carolina	731,204	Z	1	41,278	4.99	111,270	9.95
South Dakota <sup>1, 6</sup>	X	X	X	12,667	14.34	25,333	12.81

Footnotes provided at end of table.

Appendix Table C-1.

**2020 National Conference of State Legislatures Congressional and State Legislative Redistricting Deviation Table—Con.**

State	2020 congressional plan		Absolute range	2020 state house plan		2020 state senate plan	
	Ideal population	Overall range (percent)		Ideal population	Overall range (percent)	Ideal population	Overall range (percent)
Tennessee . . . . .	767,871	Z	1	69,806	9.90	209,419	6.17
Texas . . . . .	766,987	Z	1	194,303	9.98	940,178	6.13
Utah . . . . .	817,904	Z	Z	43,622	8.69	112,814	3.56
Vermont <sup>1</sup> . . . . .	X	X	X	4,287	16.65	21,436	14.41
Virginia <sup>2</sup> . . . . .	784,672	Z	1	86,314	4.92	215,785	4.69
Washington <sup>2</sup> . . . . .	770,528	Z	27	157,251	0.25	157,251	0.25
West Virginia . . . . .	896,858	0.18	1,582	17,937	9.92	105,513	9.85
Wisconsin . . . . .	736,715	Z	2	59,533	0.76	178,598	0.57
Wyoming <sup>1</sup> . . . . .	X	X	X	9,304	10.96	18,608	10.54

X Not applicable.

Z Represents or rounds to zero.

<sup>1</sup> State has only one congressional seat.

<sup>2</sup> State adjusted population counts by reallocating prisoner populations for either legislative districts or for legislative and congressional districts prior to redistricting.

<sup>3</sup> Hawaii allocates the total number of members of each house of the state legislature among the four basic island units (Hawaii, Maui, Kauai, and Oahu) using the total number of permanent residents of each basic island unit and computed by the method of equal proportions. After making this allocation, the number of legislators allocated to each basic island unit is apportioned so that for each house the average number of permanent residents per member in each district is as nearly equal to the average for the basic island unit as practicable. Nonpermanent military and student residents are extracted from the census population of the census blocks of each basic island unit prior to redistricting.

<sup>4</sup> In Maryland, state house districts may elect one, two, or three members at-large; these districts are nested within one district for the upper chamber. There are 47 state senators from 47 state senate districts and 141 house delegates from 71 state house districts.

<sup>5</sup> This state uses flatorial districts for the U.S. House of Representatives. The calculations here are based upon the aggregate method (i.e., the traditional house method).

<sup>6</sup> Nearly all districts in North Dakota and South Dakota are two-person multimember, but a small number of districts in each state have single-house districts for Voting Rights Act purposes. This state house plan column has single-member ideal district populations; check the senate plan column for the multimember ideal district size.

Source: National Conference of State Legislatures.

Appendix Table C-2.

**Changes in the Number of Census Blocks: 2000–2020**

FIPS code	Name	2000 Census blocks	2010 Census blocks	2020 Census blocks	Numerical change 2000–2010	Percent change 2000–2010	Numerical change 2010–2020	Percent change 2010–2020	Numerical change 2000–2020	Percent change 2000–2020
01	Alabama	175,220	252,266	185,976	77,046	44.0	-66,290	-26.3	10,756	6.1
02	Alaska	21,874	45,292	28,568	23,418	107.1	-16,724	-36.9	6,694	30.6
04	Arizona	158,294	241,666	155,444	83,372	52.7	-86,222	-35.7	-2,850	-1.8
05	Arkansas	141,178	186,211	136,422	45,033	31.9	-49,789	-26.7	-4,756	-3.4
06	California	533,163	710,145	519,723	176,982	33.2	-190,422	-26.8	-13,440	-2.5
08	Colorado	141,040	201,062	140,345	60,022	42.6	-60,717	-30.2	-695	-0.5
09	Connecticut	53,835	67,578	49,926	13,743	25.5	-17,652	-26.1	-3,909	-7.3
10	Delaware	17,483	24,115	20,198	6,632	37.9	-3,917	-16.2	2,715	15.5
11	District of Columbia	5,674	6,507	6,012	833	14.7	-495	-7.6	338	6.0
12	Florida	362,499	484,481	390,066	121,982	33.7	-94,415	-19.5	27,567	7.6
13	Georgia	214,576	291,086	232,717	76,510	35.7	-58,369	-20.1	18,141	8.5
15	Hawaii	18,990	25,016	14,732	6,026	31.7	-10,284	-41.1	-4,258	-22.4
16	Idaho	88,452	149,842	81,879	61,390	69.4	-67,963	-45.4	-6,573	-7.4
17	Illinois	366,137	451,554	369,978	85,417	23.3	-81,576	-18.1	3,841	1.0
18	Indiana	201,321	267,071	204,568	65,750	32.7	-62,503	-23.4	3,247	1.6
19	Iowa	168,075	216,007	175,199	47,932	28.5	-40,808	-18.9	7,124	4.2
20	Kansas	173,107	238,600	172,529	65,493	37.8	-66,071	-27.7	-578	-0.3
21	Kentucky	122,141	161,672	132,662	39,531	32.4	-29,010	-17.9	10,521	8.6
22	Louisiana	139,867	204,447	142,874	64,580	46.2	-61,573	-30.1	3,007	2.1
23	Maine	56,893	69,518	47,138	12,625	22.2	-22,380	-32.2	-9,755	-17.1
24	Maryland	79,128	145,247	83,827	66,119	83.6	-61,420	-42.3	4,699	5.9
25	Massachusetts	109,997	157,508	107,278	47,511	43.2	-50,230	-31.9	-2,719	-2.5
26	Michigan	258,925	329,885	254,730	70,960	27.4	-75,155	-22.8	-4,195	-1.6
27	Minnesota	200,222	259,777	198,705	59,555	29.7	-61,072	-23.5	-1,517	-0.8
28	Mississippi	136,150	171,778	112,241	35,628	26.2	-59,537	-34.7	-23,909	-17.6
29	Missouri	241,532	343,565	253,632	102,033	42.2	-89,933	-26.2	12,100	5.0
30	Montana	99,018	132,288	88,417	33,270	33.6	-43,871	-33.2	-10,601	-10.7
31	Nebraska	133,692	193,352	119,103	59,660	44.6	-74,249	-38.4	-14,589	-10.9
32	Nevada	60,831	84,538	57,409	23,707	39.0	-27,129	-32.1	-3,422	-5.6
33	New Hampshire	34,728	48,837	31,948	14,109	40.6	-16,889	-34.6	-2,780	-8.0
34	New Jersey	141,342	169,588	137,972	28,246	20.0	-31,616	-18.6	-3,370	-2.4
35	New Mexico	137,055	168,609	107,215	31,554	23.0	-61,394	-36.4	-29,840	-21.8
36	New York	298,506	350,169	288,819	51,663	17.3	-61,350	-17.5	-9,687	-3.2
37	North Carolina	232,403	288,987	236,638	56,584	24.3	-52,349	-18.1	4,235	1.8
38	North Dakota	84,351	133,769	84,566	49,418	58.6	-49,203	-36.8	215	0.3
39	Ohio	277,807	365,344	276,428	87,537	31.5	-88,916	-24.3	-1,379	-0.5
40	Oklahoma	176,064	269,118	180,154	93,054	52.9	-88,964	-33.1	4,090	2.3
41	Oregon	156,232	196,621	130,807	40,389	25.9	-65,814	-33.5	-25,425	-16.3
42	Pennsylvania	322,424	421,545	336,985	99,121	30.7	-84,560	-20.1	14,561	4.5
44	Rhode Island	21,023	25,181	25,649	4,158	19.8	468	1.9	4,626	22.0
45	South Carolina	143,919	181,908	146,844	37,989	26.4	-35,064	-19.3	2,925	2.0
46	South Dakota	77,951	88,360	71,383	10,409	13.4	-16,977	-19.2	-6,568	-8.4
47	Tennessee	182,203	240,116	179,717	57,913	31.8	-60,399	-25.2	-2,486	-1.4
48	Texas	675,062	914,231	668,757	239,169	35.4	-245,474	-26.9	-6,305	-0.9
49	Utah	74,704	115,406	71,207	40,702	54.5	-44,199	-38.3	-3,497	-4.7
50	Vermont	24,824	32,580	24,611	7,756	31.2	-7,969	-24.5	-213	-0.9
51	Virginia	145,399	285,762	163,491	140,363	96.5	-122,271	-42.8	18,092	12.4
53	Washington	170,871	195,574	158,093	24,703	14.5	-37,481	-19.2	-12,778	-7.5
54	West Virginia	81,788	135,218	72,558	53,430	65.3	-62,660	-46.3	-9,230	-11.3
55	Wisconsin	200,348	253,096	203,059	52,748	26.3	-50,037	-19.8	2,711	1.4
56	Wyoming	67,264	86,204	53,769	18,940	28.2	-32,435	-37.6	-13,495	-20.1
72	Puerto Rico	56,781	77,189	41,987	20,408	35.9	-35,202	-45.6	-14,794	-26.1

Source: U.S. Census Bureau, MAF/TIGER System.

Appendix Table C-3.

**Legislative and Voting District Tallies From the 2020 Census Redistricting Data Program**

FIPS code	Name	Congressional district	State legislative district—upper	State legislative district—lower	Voting district
	<b>Total</b> .....	<b>435</b>	<b>1,958</b>	<b>4,874</b>	<b>158,313</b>
01	Alabama .....	7	35	105	1,837
02	Alaska .....	1	20	40	456
04	Arizona <sup>4</sup> .....	9	30	30	1,537
05	Arkansas .....	4	35	100	2,747
06	California .....	52	40	80	Z
08	Colorado .....	8	35	65	3,108
09	Connecticut <sup>1, 2, 3</sup> .....	5	36	151	766
10	Delaware .....	1	21	41	412
11	District of Columbia .....	*	8	Z	143
12	Florida <sup>4</sup> .....	28	40	120	7,208
13	Georgia .....	14	56	180	2,698
15	Hawaii .....	2	25	51	Z
16	Idaho .....	2	35	35	931
17	Illinois <sup>1, 2, 3, 4</sup> .....	17	59	118	10,082
18	Indiana .....	9	50	100	5,159
19	Iowa .....	4	50	100	2,536
20	Kansas .....	4	40	125	4,240
21	Kentucky .....	6	38	100	3,693
22	Louisiana <sup>2, 4</sup> .....	6	39	105	3,534
23	Maine .....	2	35	151	199
24	Maryland <sup>4</sup> .....	8	47	71	2,033
25	Massachusetts <sup>3, 4</sup> .....	9	40	160	2,152
26	Michigan <sup>4</sup> .....	13	38	110	4,765
27	Minnesota <sup>4</sup> .....	8	67	134	4,107
28	Mississippi .....	4	52	122	1,834
29	Missouri .....	8	34	163	4,604
30	Montana .....	2	50	100	666
31	Nebraska .....	3	49	Z	1,402
32	Nevada <sup>4</sup> .....	4	21	42	2,100
33	New Hampshire <sup>1, 2, 3, 4</sup> .....	2	24	164	325
34	New Jersey <sup>4</sup> .....	12	40	40	6,356
35	New Mexico .....	3	42	70	1,977
36	New York .....	26	63	150	14,191
37	North Carolina .....	14	50	120	2,666
38	North Dakota .....	1	47	49	421
39	Ohio <sup>4</sup> .....	15	33	99	8,933
40	Oklahoma <sup>4</sup> .....	5	48	101	1,946
41	Oregon .....	6	30	60	Z
42	Pennsylvania .....	17	50	203	9,178
44	Rhode Island <sup>4</sup> .....	2	38	75	422
45	South Carolina .....	7	46	124	2,268
46	South Dakota .....	1	35	37	785
47	Tennessee .....	9	33	99	1,965
48	Texas .....	38	31	150	9,007
49	Utah .....	4	29	75	2,745
50	Vermont .....	1	16	109	285
51	Virginia .....	11	40	100	2,465
53	Washington .....	10	49	49	7,434
54	West Virginia .....	2	17	100	1,051
55	Wisconsin <sup>2, 3</sup> .....	8	33	99	7,059
56	Wyoming <sup>4</sup> .....	1	31	62	511
72	Puerto Rico <sup>2, 3, 4</sup> .....	**	8	40	1,374

Z Represents or rounds to zero.

\* Congressional district (at large).

\*\* Resident Commissioner District (at large).

<sup>1</sup> In addition to the number shown, the state has a congressional district consisting of area left unassigned by the state, typically a water area.<sup>2</sup> In addition to the number shown, the state has a state legislative district-upper consisting of area left unassigned by the state, typically, a water area.<sup>3</sup> In addition to the number shown, the state has a state legislative district-lower, consisting of area left unassigned by the state, typically a water area.<sup>4</sup> In addition to the number shown, the state has one or more voting district(s) consisting of area left unassigned by the state, typically consisting of water.

Note: The tallies shown in this table reflect the number of entities stored in the Census Bureau's MAF/TIGER System, which are the entities provided and verified by the Redistricting Data Program's official state liaisons. These tallies may differ from tallies generated by other sources who may account for special situations, such as the subdistricts, multimember districts, or floterial districts differently.

Source: U.S. Census Bureau, MAF/TIGER System.

---

## APPENDIX D.

### REDISTRICTING DATA SOFTWARE VENDORS

#### **ARCBridge Consulting and Training, Inc.**

21515 Ridgetop Circle, Suite 290  
Sterling, VA 20166  
Tel: 703-834-6511, Fax: 703-834-6514  
Email: <info@arcbridge.com>; <priti@arcbridge.com>  
URL: <www.arcbridge.com>  
Contact: Priti Mathur

DISTRICTSolv is a desktop product developed on the Esri ArcMap desktop platform. DISTRICTSolv was developed by ARCBridge Consulting & Training Inc. in 2010, utilizing its founder's redistricting experience at the Department of Justice, Civil Rights Division, Voting Section and at the U.S. Census Bureau. DISTRICTSolv allows users to import, create, and edit an unlimited number of district plans at the census county, tract, block group, block, and precinct geographies, and create community of interest maps and reports. DISTRICTSolv provides an easy-to-use interface, comes bundled with processed P.L. 94-171 data, offers automated creation of districts, and checks for contiguity and compactness. We also provide redistricting and reprecincting services.

#### **Azavea, Inc.**

990 Spring Garden Street, 5th Floor  
Philadelphia, PA 19123  
Tel: 215-925-2600, Fax: 215-925-2663  
Email: <info@azavea.com>  
URL: <www.districtbuilder.org>  
Contact: Mary Johnson

DistrictBuilder is an open-source software solution and public engagement tool that puts the power of drawing electoral maps in the hands of stakeholders and community members to support an open and collaborative redistricting process. The development of DistrictBuilder was led by a partnership between Azavea and leading redistricting experts Dr. Michael McDonald (University of Florida) and Dr. Micah Altman (MIT) at the Public Mapping Project. A version of DistrictBuilder for all fifty states is freely available to anyone who wants to sign up. DistrictBuilder also offers a paid subscription option, DistrictBuilder for Organizations, to provide advocacy groups, nonprofits, or nonpartisan redistricting commissions

the additional tools and advanced customization options they need to engage community groups and citizens in the public redistricting process and showcase maps created by the community. DistrictBuilder comes preloaded with key demographic data and block, block group, tract, and county-level geographic boundaries from the U.S. Census Bureau to enable users to perform redistricting tasks for congressional districts and state legislatures right from the start. Users can evaluate contiguity, compactness, population deviation from target, majority-minority status, political competitiveness, and other relevant metrics in compliance with the regulations for a particular jurisdiction. DistrictBuilder can also combine local data with the census data to support city, county, and school redistricting processes.

#### **Caliper Corporation**

1172 Beacon Street  
Newton, MA 02461  
Tel: 617-524-4700, Fax: 617-527-5113  
Email: <sales@caliper.com>  
URL: <www.caliper.com>  
Contact: Tracy Horgan

Maptitude for Redistricting is the professional tool for political redistricting. The newest version includes advanced features, the latest census geography and data, one-button conversion of existing plans to the latest TIGER geography, new and enhanced reports, a state-of-the-art interface, open access to industry-standard file formats, interoperability with Google Maps and Google Earth, an updated manual, video tutorials, context-sensitive Help, web solutions, and more. Maptitude for Redistricting includes all of the features in Caliper's Maptitude Geographic Information System (GIS) software. Maptitude is full-featured mapping and GIS software that has established new standards for performance and value for over 2 decades. It provides a complete set of mapping and spatial analysis functions, sophisticated geocoding, tools for complex data manipulation, and a large collection of nationwide geographic data.

---

## Citygate GIS

857 Childs Point Road  
Annapolis, MD 21401  
Tel: 410-295-3333 ext. 111, Cell: 410-707-2083  
Email: <fhejazi@citygategis.com>  
URL: <www.citygategis.com>  
Contact: Fred Hejazi

Citygate provides the EDGE Professional Desktop redistricting suite which includes the EDGE data processing tool for import of census and election data, the EDGE Desktop redistricting tool, and the EDGE Data Analytics tool which allows analysis of demographic and political data. Citygate also offers the myDistricting.com web-based redistricting solution which includes online citizen redistricting, plan management, online commenting, communities of interest, plan viewing, and a who-is-my legislator lookup tool. Online tools can be locally hosted or provided as a service on Citygate's Amazon cloud. All desktop and web solutions are fully integrated with one another which means plans, comments, and communities of interest can be seamless and instantly passed between the desktop and web solutions. The EDGE desktop solution is based on ESRI's GIS technology using open data standards such as GeoPackages, and Shapefiles. Mydistricting.com uses Google Maps APIs integrated with a Postgres database.

## Election Data Services, Inc.

6171 Emerywood Court  
Manassas, VA 20112-3078  
Tel: 202-789-2004 or 703-580-7267  
Fax: 703-580-6258, Cell: 202-607-5857  
Email: <KBrace@electiondataservices.com>  
URL: <www.electiondataservices.com>  
Contact: Kimball Brace

Election Data Services, Inc. provided database building and overall redistricting consulting services to a number of states and local governments in the 2020 process, as we have back to 1980. Our specialty has been creating sophisticated and highly complicated databases necessary to meet the many demands of the redistricting and any subsequent court case processes. We also provided staffing and map drawing services for redistricting commissions

and committees, analysis of demographic trends, and expert witness testimony. We also developed special software module extensions to existing software packages.

## ESRI

380 New York Street  
Redlands, CA 92373  
Tel: 909-793-2853  
Email: <Rleadbeater@esri.com>  
URL: <www.esri.com>  
Contact: Richard Leadbeater

Esri Redistricting is a web-based solution which addresses common needs and challenges related to redistricting at the state and local level, allowing for the creation of regulation-compliant plans using a collaborative workflow which allows for better transparency and more involvement from the community. Based on Esri's proven ArcGIS platform, Esri Redistricting provides comprehensive features and functionality that takes care of the end-to-end redistricting workflow; from plan creation and editing to community involvement and review. The components of Esri Redistricting can be paired with multiple deployment options, on-premises at the client's site or hosted in a secure cloud environment through Esri Managed Services. Share plans privately or publicly through ArcGIS Online in a secure IT environment. Manage Users and Groups with full control over who edits, comments, or only views your plans. Access Census data, Esri basemaps, and other data sources including demographics, streets, imagery and local basemaps to provide a visual context to the redistricting process.

## International Computer Works, Inc.

111 South Riverhills Drive  
Temple Terrace, FL 33617  
Tel: 813-988-0343; Fax: 813-985-5661  
Email: <ken@icwmaps.com>  
URL: <www.icwmaps.com>  
Contact: Ken Tozier

ICW, founded in 1988 as a Florida corporation, develops applications to translate, edit, and use TIGER®/Line Shapefiles. Applications include GeoAuthor®, GeoPoints, GeoElections®, GeoSchools®,

---

GeoChoice®, and GeoCAD911™. We have clients in multiple states engaged in elections, K thru 12, and 911. To assist clients with the VTD phase in 2017-18, ICW provided elections clients with software, training, and support for GeoAuthor® VTD Edition. For ease of use for the benefit of our client base, we develop with ArcGIS and MapInfo. Regarding elections, we provide the tools to edit the map, geocode their voters, and redistrict the map. In addition, we provide the interoperability to import the data from the map to our counties voter registration systems.

### **MGGG Redistricting Lab**

Tisch College of Civic Life, Tufts University  
163 Packard Avenue  
Medford, MA 02155  
Email: <contact@mggg.org>  
URL: <https://districtr.org>  
Contact: Moon Duchin

Districtr (pronounced “district-er”) is a user-friendly web tool for drawing districting plans and identifying communities of interest. The goal of Districtr is to put the tools of redistricting in the hands of the public, with an accessible, free-to-use tool that functions right in the web browser. Design principles focus on meeting the needs of community groups, redistricting commissions, and civil rights organizations. Users can draw districts and map their communities of interest in all 50 states, the District of Columbia, and Puerto Rico. Districtr offers mapping modules for the U.S. House of Representatives and state legislatures, as well as select city councils, county commissions, school boards, and so on. All of the code is open source and posted on GitHub <https://github.com/districtr/districtr>.

### **Polidata LLC**

P.O. Box 530  
Corinth, VT 05039  
Tel: 703-690-4066; Fax: 202-318-0793  
Email: <clark@polidata.org>  
URL: <www.polidata.org>  
Contact: Clark Bensen, principal consultant

Polidata has been involved in redistricting in over half of the states for several decades. The main role in most situations is consulting with stakeholders on the development and matching of their political geography with election results in preparation for merging with census data. This is accomplished via customized software using a relational database system that allows for fundamental analyses of redistricting plans regardless of the specialized redistricting package used by the client. Litigation support, especially working with experts to assure they have the data they need, allows for post-redistricting support.

Clark Bensen is familiar with census issues and was appointed to a federal advisory panel by the Secretary of Commerce, serving through the decade preparation for the 2010 Census.

### ***Disclaimer***

*This list includes redistricting software and service vendors and other redistricting software or tools that may be available. It is not necessarily a comprehensive list of all vendors, products, services, software, and redistricting tools available. The U.S. Census Bureau is providing this list for the convenience of the reader. Such use does not constitute an official endorsement or approval by the Census Bureau of any private sector or third-party website, product, or service.*

*The Census Bureau does not control or guarantee the accuracy, relevance, timeliness, or completeness of information on these websites or provided by these vendors and neither endorses nor guarantees in any way the external organizations, services, advice, or products included in these website links or provided by these vendors. When using these vendor websites, readers should be aware that they are subject to any terms of use, privacy policies, and security policies of the owners/sponsors of the vendor website.*

---

## APPENDIX E.

# FEDERAL REGISTER NOTICE—ESTABLISHMENT OF THE 2030 REDISTRICTING DATA PROGRAM

## DEPARTMENT OF COMMERCE

### U.S. Census Bureau

[Docket Number: 240613-0160]

X-RIN 0607-XC076

### Establishment of the 2030 Census Redistricting Data Program

**AGENCY:** U.S. Census Bureau, Department of Commerce

**ACTION:** Notice of Program

**SUMMARY:** This notice announces and seeks comments on the establishment of the 2030 Census Redistricting Data Program. Required by law, the program provides the States the opportunity to specify the geographic areas for which they wish to receive 2030 Census population totals for the purpose of reapportionment and redistricting.

**DATES:** Comments on this notice are due by August 8, 2024. The program is expected to begin with the solicitation of official liaisons from the states in early 2025.

**ADDRESSES:** Comments may be submitted by either of the following methods:

- Electronic submission: Submit electronic public comments via the Federal eRulemaking Portal.
  1. Go to [www.regulations.gov](http://www.regulations.gov) and enter Docket Number USBC-2024-0016 in the search field.
  2. Click the “Comment Now!” icon and complete the required fields.
  3. Enter or attach your comments.
- By email: Comments in electronic form may also be sent to <[rdo@census.gov](mailto:rdo@census.gov)>.

All comments responding to this document will be a matter of public record. Relevant comments will generally be available on the Federal eRulemaking Portal at <https://www.Regulations.gov>.

The Census Bureau will not accept comments accompanied by a request that part or all of the material be treated confidentially for any reason. Therefore, do not submit confidential business information or otherwise sensitive, protected, or personal information, such as account numbers, Social Security numbers, or names of other individuals.

**FOR FURTHER INFORMATION CONTACT:** James Whitehorne—Chief, Redistricting and Voting Rights Data Office, c/o Census ADDC Mailbox, U.S. Census Bureau, 4600 Silver Hill Road, Washington D.C. 20233 or by email to <[rdo@census.gov](mailto:rdo@census.gov)>.

**SUPPLEMENTARY INFORMATION:** Under the provisions of Title 13, Section 141(c) of the United States Code (U.S.C.), the Secretary of Commerce (Secretary) is required to provide the “officers or public bodies having initial responsibility for the legislative apportionment or districting of each state” with the opportunity to specify geographic areas (e.g., census tabulation blocks, voting districts) for which they wish to receive decennial census population counts for the purpose of reapportionment or redistricting. The same statute requires the Secretary to furnish the state officials or their designees with population counts for standard

---

census tabulation areas (e.g., state, congressional district, state legislative district, American Indian area, county, city, town, census tract, census block group, and census tabulation block) and voting districts (if provided by the state) by April 1 of the year following the decennial census. The Secretary has delegated these responsibilities to the Director of the Census Bureau.

In accordance with the provisions of 13 U.S.C. 141(c), via this notice the Director announces the establishment of the 2030 Census Redistricting Data Program (RDP). In early 2025, the Census Bureau plans to invite the executive officer and the officers or public bodies having initial responsibility for legislative reapportionment and redistricting in each state to agree on and jointly identify a nonpartisan liaison(s) who will work directly with the Census Bureau on the RDP. Once these liaisons are established, the Census Bureau will communicate to each state through their nonpartisan liaison(s) the specific requirements of their participation.

Under 13 U.S.C. 141(c), RDP participation is voluntary. However, if states choose not to participate, the Census Bureau cannot ensure that the 2030 Census tabulation geography will support the redistricting needs of those states. The Census Bureau is proposing to structure the 2030 RDP into five phases, similar to how the program was structured for the 2020 Census.

### **Phase 1: Block Boundary Suggestion Project (BBSP)**

In late 2025, the Census Bureau plans to formally announce the commencement of Phase 1: Block Boundary Suggestion Project (BBSP) through a Federal Register notice. The purpose of the BBSP is to afford states the opportunity to identify nonstandard features often used as electoral boundaries (such as power lines, property lines, or streams) that could be used in conjunction with more traditional features (such as street centerlines) as census tabulation block boundaries. The state liaison can identify and suggest that some of these features be used as 2030 census tabulation block boundaries, resulting in more meaningful tabulation block data for the state. The liaison may work with local officials, including county election officers and others, to ensure local geography is represented in the 2030 census tabulation block inventory. In addition, the liaison may make suggestions for features not desirable as census tabulation block boundaries.

Beginning in early 2026, the Census Bureau plans to provide to states that choose to participate in Phase 1 the guidelines and training for providing their suggestions for the 2030 census tabulation block boundaries as well as their suggestions for exclusion of line segments for consideration in the final 2030 census tabulation block boundary inventory. States will also have the opportunity to review legal boundaries such as incorporated place, American Indian area, and county boundaries, in coordination with the annual Boundary and Annexation Survey (BAS) program. Incorporating the opportunity for states to review legal boundaries was successfully implemented for the first time in the 2020 RDP and proved valuable as these legal boundaries also become census tabulation block boundaries. The Census Bureau plans to process all tabulation block boundary suggestions and provide state liaisons the opportunity to verify them in early 2027.

### **Phase 2: Voting District Project (VTDP)**

In late 2027, the Census Bureau plans to formally announce the commencement of Phase 2: Voting District Project (VTDP) through a Federal Register notice. The VTDP will provide the state liaisons the opportunity to submit and verify their voting districts (a generic term used to represent areas that administer elections such as precincts, election districts, and wards) to the Census Bureau for inclusion in the 2030 Census Redistricting Data (P.L. 94-171) products (tabulated data and geographic products).

Beginning in early 2028, the Census Bureau plans to begin the initial voting district update cycle, providing to states that choose to participate guidelines and training for submitting their voting district boundaries. The Census Bureau will process the updates and provide states two opportunities to verify the updates were processed correctly. The first verification cycle is planned for early 2029. The second verification cycle, planned for early 2030, will only be available to states that participated in the initial update cycle or the first verification cycle. State liaisons will also continue to have the opportunity to make census tabulation block boundary suggestions and to review legal boundaries such as incorporated place, American Indian area, and county boundaries in coordination with the annual BAS during the initial update cycle and the first verification cycle.

---

### **Phase 3: Delivery of the 2030 Census Redistricting Data**

In accordance with 13 U.S.C. 141(c), the Director will furnish the Governor, state legislative leaders of both the majority and minority parties, and any other sitting “officers or public bodies having initial responsibility for the legislative apportionment or districting of each state” with 2030 Census population counts for standard census tabulation areas (e.g., state, congressional district, state legislative district, American Indian area, county, city, town, census tract, census block group, and census tabulation block) regardless of whether or not a state participates in Phases 1 or 2. The Director will also provide 2030 Census population counts for voting districts to any state that participated in Phase 2. Delivery is expected to occur prior to or alongside the public release of the 2030 Census Redistricting Data (P.L. 94-171) Summary File, no later than April 1, 2031.

### **Phase 4: Collection of Post-2030 Census Congressional and State Legislative District Plans**

Beginning in 2031, the Census Bureau plans to solicit from each state the newly drawn legislative and congressional district plans based on the 2030 census results and compile population, housing and other data for those new districts. This effort is expected to occur every 2 years in advance of the 2040 Census in order to update these district boundaries with new or changed plans. A verification phase is planned to occur with each 2-year update cycle.

### **Phase 5: Review of the 2030 Census Redistricting Data Program and Recommendations for the 2040 Census Redistricting Data Program**

As the final phase of the 2030 Census Redistricting Data Program, the Census Bureau will work with the states to conduct a thorough review of the program. The intent of this review, and the final report that results, is to provide guidance to the Secretary and the Director in planning the 2040 Census Redistricting Data Program. Please address questions concerning any aspect of the 2030 RDP to the person identified in the contact section of this notice.

Robert L. Santos, Director, Census Bureau, approved the publication of this Notice in the **Federal Register**.

Dated: July 2, 2024.

#### **Shannon Wink,**

Program Analyst, Policy Coordination Office,  
U.S. Census Bureau.

[FR Doc. 2024-14962 Filed 7-8-24; 8:45 am]

BILLING CODE 3510-07-P

